

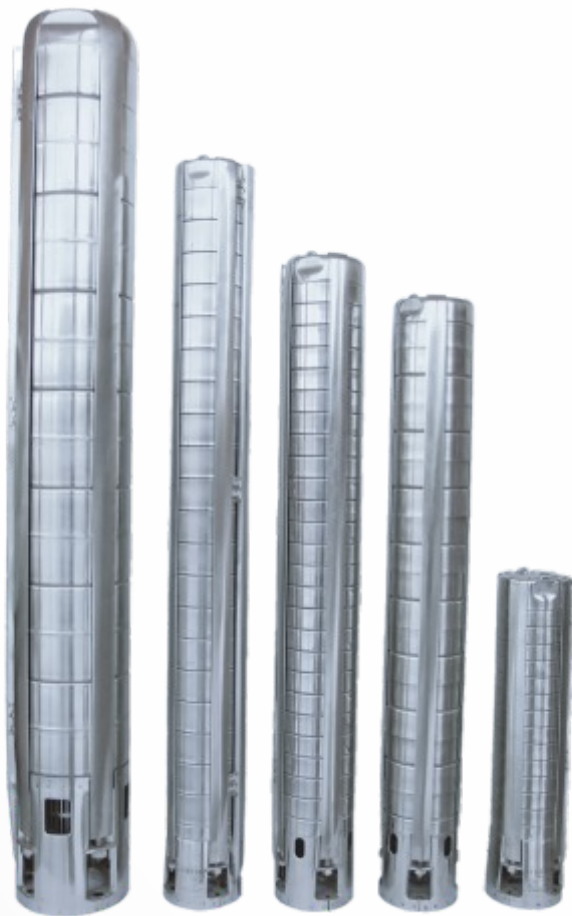
WATER TECH INNOVATORS

**BFPUMPS**

## CATÁLOGO GERAL BOMBAS SUBMERSÍVEIS

*Submersible Pumps General Catalog*

# 60Hz



Fábrica Nacional de Bombas, S.A.

[www.britefil.com](http://www.britefil.com)





<b>3</b>	<b>BOMBAS SUBMERSÍVEIS - 60 Hz</b> Submersible Pump – BF Pumps
<b>4</b>	<b>BF 2 S - 60 Hz</b> BF Pumps
<b>6</b>	<b>BF 3.3 S - 60 Hz</b> BF Pumps
<b>8</b>	<b>BF 5 S - 60 Hz</b> BF Pumps
<b>10</b>	<b>BF 7 S - 60 Hz</b> BF Pumps
<b>12</b>	<b>BF 11 S - 60 Hz</b> BF Pumps
<b>14</b>	<b>BF 15 S - 60 Hz</b> BF Pumps
<b>16</b>	<b>BF 24 S - 60 Hz</b> BF Pumps
<b>18</b>	<b>BF 26 S - 60 Hz</b> BF Pumps
<b>20</b>	<b>BF 45 S - 60 Hz</b> BF Pumps
<b>22</b>	<b>BF 70 S - 60 Hz</b> BF Pumps
<b>24</b>	<b>BF 90 S - 60 Hz</b> BF Pumps
<b>26</b>	<b>BF 150 S - 60 Hz</b> BF Pumps
<b>28</b>	<b>BF 190 S - 60 Hz</b> BF Pumps
<b>32</b>	<b>BF 250 S - 60 Hz</b> BF Pumps
<b>36</b>	<b>BF 330 S - 60 Hz</b> BF Pumps

# BFPUMPS

## SUBMERSIBLE PUMPS GENERAL CATALOG

# 60Hz

### Aplicações

As bombas submersíveis Britefil estão desenhadas para uma vasta gama de aplicações ligadas ao abastecimento de água e transferência de líquidos, tais como elevação, fornecimento de água subterrânea para o uso doméstico ou público, sistemas de irrigação agrícola ou hortofrutícola, diversos usos industriais e aplicação com painéis solares

### Líquidos Bombeados

Líquidos não agressivos, finos, limpos e isentos de partículas ou fibras

### Condições de Operação

Caudais (Q) de 0,1 - 330 m<sup>3</sup>/h  
Altura Manométrica (H) 495 m (maiores prof. sob consulta)  
Temperatura dos líquidos:

motor	4"	6"	8"
temperatura	40°C	35°C	30°C

(Para condições de operação diferentes, queira contactar a BRITEFIL Fábrica Nacional de Bombas, S.A., ou um distribuidor autorizado da mesma)

### Características

Todos os componentes da bomba são fabricados em aço inox e a bomba contém retentores internos em borracha lubrificadas a água.

A cabeça de impulsão (ou saída) está equipada com uma válvula de retenção e roscada internamente afim de permitir a sua fácil ligação à coluna de tubos.

O corpo da bomba é composto por etapas (andares) sobrepostos, as turbinas são encaixadas ou apertadas com casquilhos cónicos ao veio.

Os difusores estão desenhados de maneira a expelir a areia através de um sistema de palhetas em Z.

O corpo de aspiração contém uma rede afim de evitar a entrada na bomba de partículas ou objectos estranhos. Quatro cintas de aperto sujeitam hermeticamente e mantêm no lugar os diferentes componentes da bomba, absorvendo o torque.

### Materiais Utilizados na Gama de Bombas Britefil

Bombas fabricadas seguindo a norma ISO 9001 e 14001, em AISI 304L; AISI 316L; AISI 904L e Duplex.

Ensaíos seguindo a norma ISO 9906.

### Application

BRITEFIL submersible pumps are designed for a wide range of applications within water supply and liquid transfer such as groundwater supply for single-family houses or waterworks, irrigation systems for horticulture or agriculture, groundwater lowering or pressure boosting, various industrial uses and application with solar panels.

### Pumped Liquids

Thin, clean, non-aggressive liquids without solid particles or fibers.

### Operating Conditions

Flow rate, Q: 0,1 - 330<sup>3</sup> m/h  
Head H: 550 m (bigger heads on request)  
Liquid temperature:

motor	4"	6"	8"
temperatura	40°C	35°C	30°C

When operating at higher temperatures, please contact BRITEFIL or an authorized dealer.

### Characteristic

All pump parts are made of stainless steel and the pump has water-lubricated rubber bearings.

The discharge chamber has internal pipe thread or flange. A non-return valve is built into the top of the pump.

The pump body is built up the stages. The impellers are splined to the pump shaft or secured with split cones.

The intermediate chamber has a built-in sand shield and guide vane, segmented with double-curved blades in Z profile.

The suction interconnector is fitted with a strainer. Straps keep together the discharge chamber, intermediate chambers and suction interconnector to ensure perfect sealing and to absorb the torque.

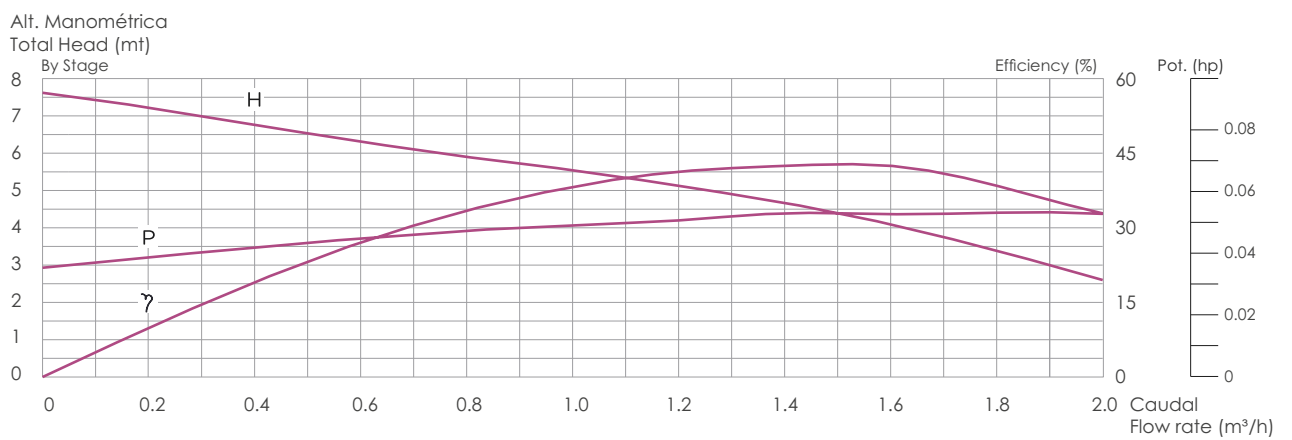
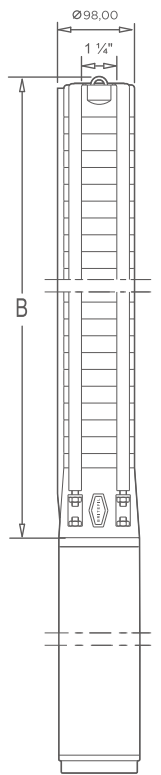
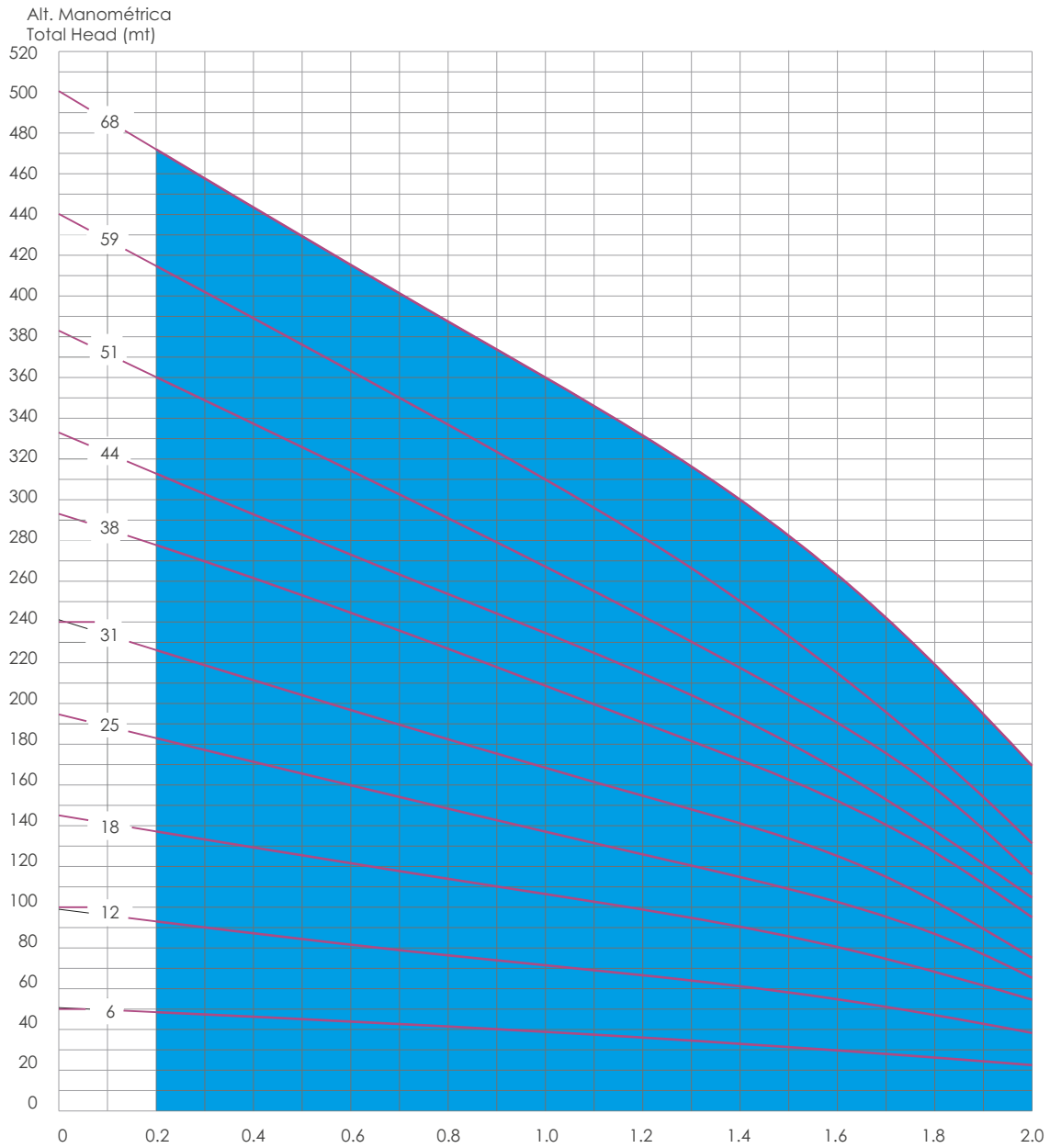
### Materials BF Range

AISI 304L; AISI 316L; AISI 904L and Duplex, according to the standards SO 9001 e 14001.

Tests following the standards ISO 9906.

# BF 2 S - 60 Hz

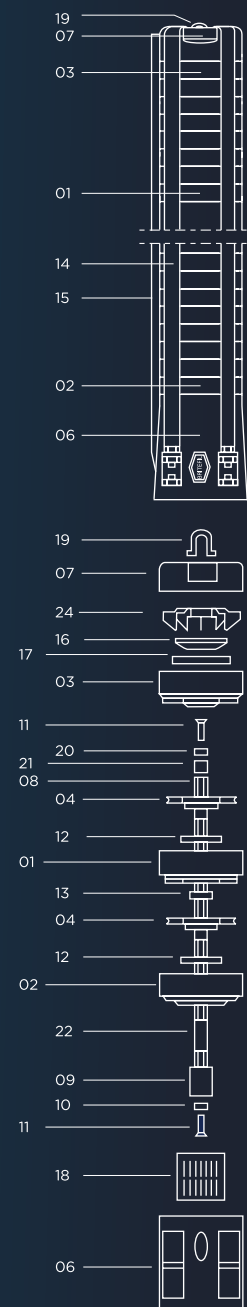
BF Pumps



# BF 2 S - 60 Hz

BF Pumps

pos.	Todos os componentes são feitos de aço inoxidável all components are made of stainless steel		Material
	Descrição	Description	
01		difusor   diffuser	AISI 304 [EN 1.4301] / 316[EN 1.4401]
02		difusor inferior com suporte de rede lower diffuser with suction strainer support	AISI 304 [EN 1.4301] / 316[EN 1.4401]
03		difusor superior   top diffuser	AISI 304 [EN 1.4301] / 316[EN 1.4401]
04		turbina   impeller	AISI 304 [EN 1.4301] / 316[EN 1.4401]
06		acoplamento do motor   motor coupling flange - suction corp	AISI 304 [EN 1.4301] / 316[EN 1.4401]
07		saída com argolas   discharge casing with two security rings	AISI 304 [EN 1.4301] / 316[EN 1.4401]
08		veio   shaft	AISI 304 [EN 1.4301] / 316[EN 1.4401]
09		cardan (ligações do veio do hidráulico ao veio do motor) coupling (shaft pump end / shaft motor)	AISI 304 [EN 1.4301] / 316[EN 1.4401]
10		anilha inferior   lower washer	AISI 304 [EN 1.4301] / 316[EN 1.4401]
11		parafuso   screw	AISI 304 [EN 1.4301] / 316[EN 1.4401]
12		retentor da turbina   impeller fencer	NBR
13		hidroluva   shaft bearing	NBR
14		cintas de aperto   fitting belts	AISI 304 [EN 1.4301] / 316[EN 1.4401]
15		calha do cabo   cable guard	AISI 304 [EN 1.4301] / 316[EN 1.4401]
16		válvula   valve	AISI 304 [EN 1.4301] / 316[EN 1.4401]
17		retentor da válvula   valve fencer	AISI 304 [EN 1.4301] / 316[EN 1.4401]
18		rede de aspiração   suction strainer	AISI 304 [EN 1.4301] / 316[EN 1.4401]
19		argola de segurança   security ring	AISI 304 [EN 1.4301] / 316[EN 1.4401]
20		Anilha superior   top washer	AISI 304 [EN 1.4301] / 316[EN 1.4401]
21		casquilho do topo   top bush	AISI 304 [EN 1.4301] / 316[EN 1.4401]
22		casquilho de baixo   lower bush	AISI 304 [EN 1.4301] / 316[EN 1.4401]
24		aranha (guia de válvulas)   spider (valve guide)	AISI 304 [EN 1.4301] / 316[EN 1.4401]



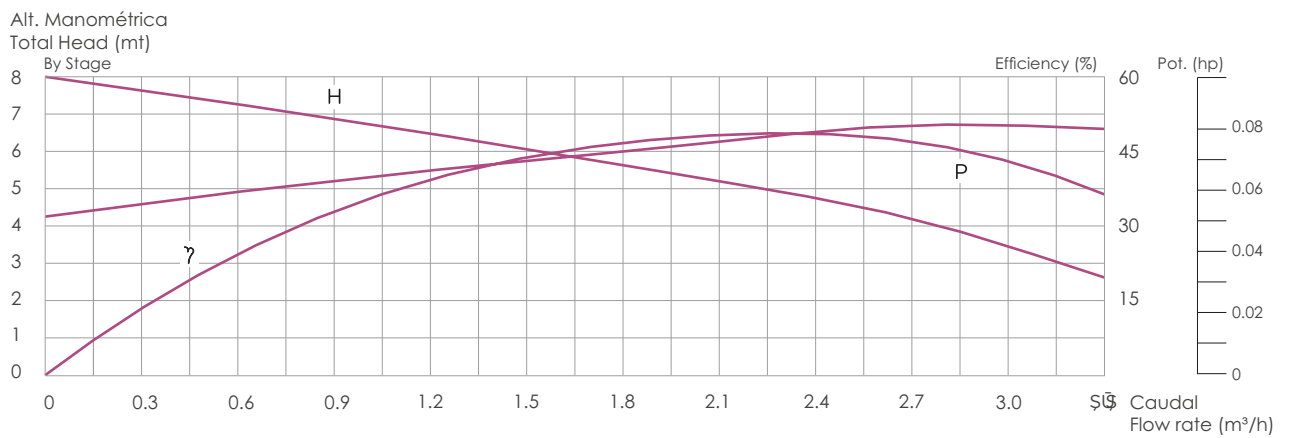
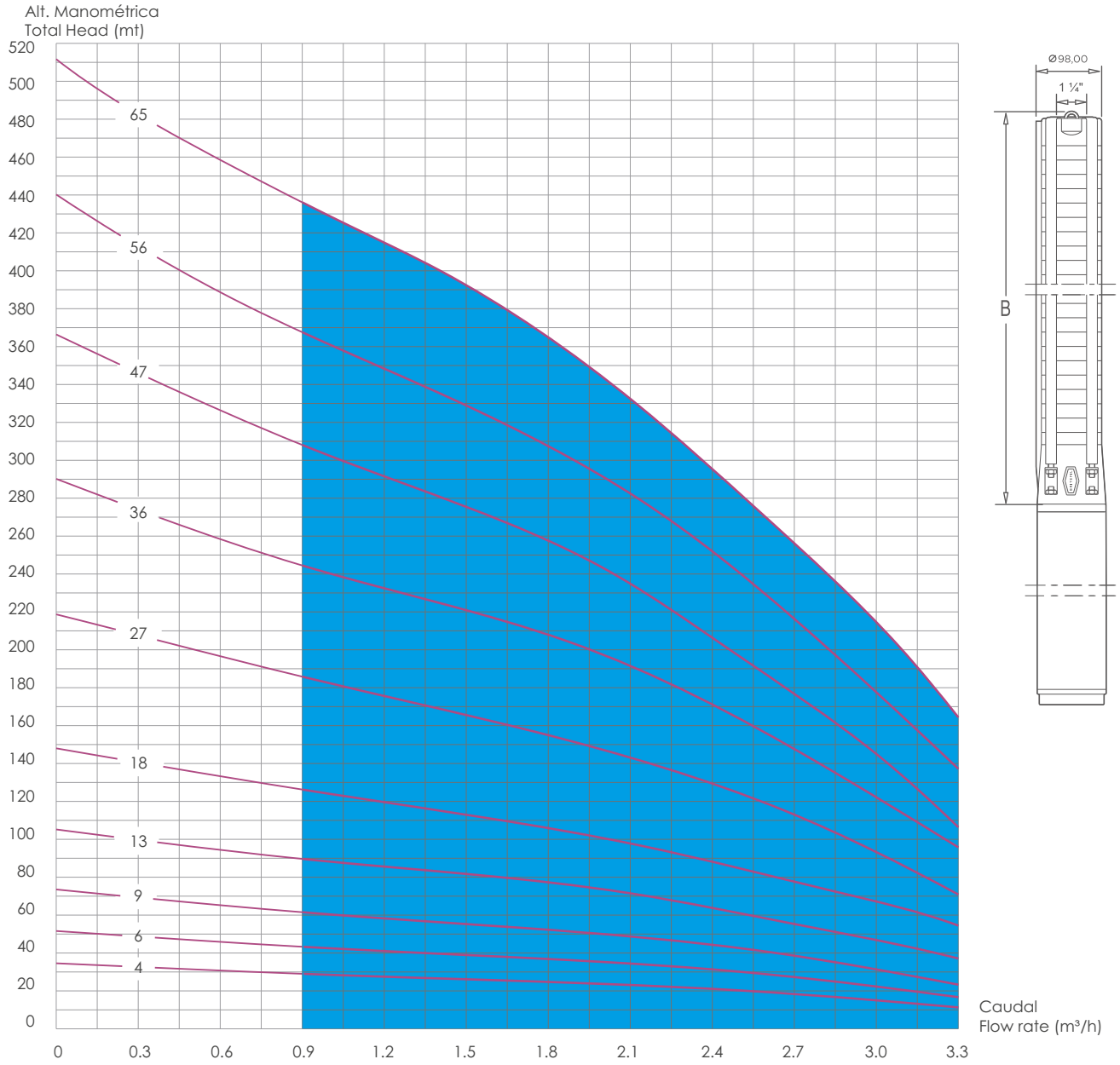
Saída / Outlet 1 1/4" Modelo / Model Tipo / Type	Motor		Altura Manométrica Total Head (m)	Caudal / Flow Rate												Comp. (B) Length (mm)	Peso (B) Weight (Kg)
	KW	HP		0	0.2	0.4	0.6	0.8	1.0	1.2	1.4	1.6	1.8	2			
	BF 2 S 6	0,37		0,5	51	49	46	44	41	39	36	33	30	26	23		
BF 2 S 12	0,55	0,75	99	93	87	82	76	72	67	61	55	47	38	405	3,8		
BF 2 S 18	0,75	1	145	137	129	122	114	107	99	90	81	68	55	252	4,8		
BF 2 S 25	1,1	1,5	195	183	171	160	148	137	126	115	103	87	65	665	6,0		
BF 2 S 31	1,5	2	241	226	211	197	182	168	155	141	125	103	75	785	7,1		
BF 2 S 38	2,2	3	293	278	262	245	227	209	191	172	152	127	95	925	8,3		
BF 2 S 44	2,2	3	333	313	293	273	254	235	215	193	167	137	105	1045	9,4		
BF 2 S 51	3	4	383	360	337	314	291	267	243	218	191	158	116	1185	10,6		
BF 2 S 59	3	4	440	415	389	363	337	310	282	250	215	176	131	1345	12,0		
BF 2 S 68	3,7	5	501	472	444	415	388	360	332	300	263	219	169	1525	13,6		

Comprimento e peso (B) referem-se à o Hidráulico.

Length and weight (B) refer to hydraulic part.

# BF 3.3 S - 60 Hz

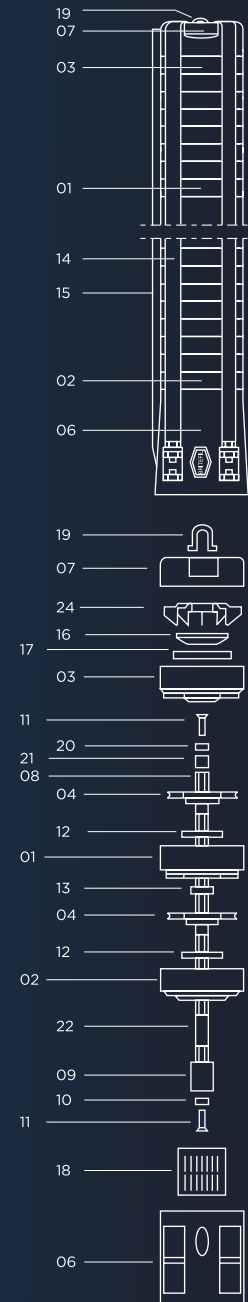
BF Pumps



# BF 3.3 S - 60 Hz

BF Pumps

pos.	Todos os componentes são feitos de aço inoxidável all components are made of stainless steel		Material
	Descrição	Description	
01		difusor   diffuser	AISI 304 [EN 1.4301] / 316[EN 1.4401]
02		difusor inferior com suporte de rede lower diffuser with suction strainer support	AISI 304 [EN 1.4301] / 316[EN 1.4401]
03		difusor superior   top diffuser	AISI 304 [EN 1.4301] / 316[EN 1.4401]
04		turbina   impeller	AISI 304 [EN 1.4301] / 316[EN 1.4401]
06		acoplamento do motor   motor coupling flange - suction corp	AISI 304 [EN 1.4301] / 316[EN 1.4401]
07		saída com argolas   discharge casing with two security rings	AISI 304 [EN 1.4301] / 316[EN 1.4401]
08		veio   shaft	AISI 304 [EN 1.4301] / 316[EN 1.4401]
09		cardan (ligações do veio do hidráulico ao veio do motor) coupling (shaft pump end / shaft motor)	AISI 304 [EN 1.4301] / 316[EN 1.4401]
10		anilha inferior   lower washer	AISI 304 [EN 1.4301] / 316[EN 1.4401]
11		parafuso   screw	AISI 304 [EN 1.4301] / 316[EN 1.4401]
12		retentor da turbina   impeller fencer	NBR
13		hidroluva   shaft bearing	NBR
14		cintas de aperto   fitting belts	AISI 304 [EN 1.4301] / 316[EN 1.4401]
15		calha do cabo   cable guard	AISI 304 [EN 1.4301] / 316[EN 1.4401]
16		válvula   valve	AISI 304 [EN 1.4301] / 316[EN 1.4401]
17		retentor da válvula   valve fencer	AISI 304 [EN 1.4301] / 316[EN 1.4401]
18		rede de aspiração   suction strainer	AISI 304 [EN 1.4301] / 316[EN 1.4401]
19		argola de segurança   security ring	AISI 304 [EN 1.4301] / 316[EN 1.4401]
20		Anilha superior   top washer	AISI 304 [EN 1.4301] / 316[EN 1.4401]
21		casquilho do topo   top bush	AISI 304 [EN 1.4301] / 316[EN 1.4401]
22		casquilho de baixo   lower bush	AISI 304 [EN 1.4301] / 316[EN 1.4401]
24		aranha (guia de válvulas)   spider (valve guide)	AISI 304 [EN 1.4301] / 316[EN 1.4401]



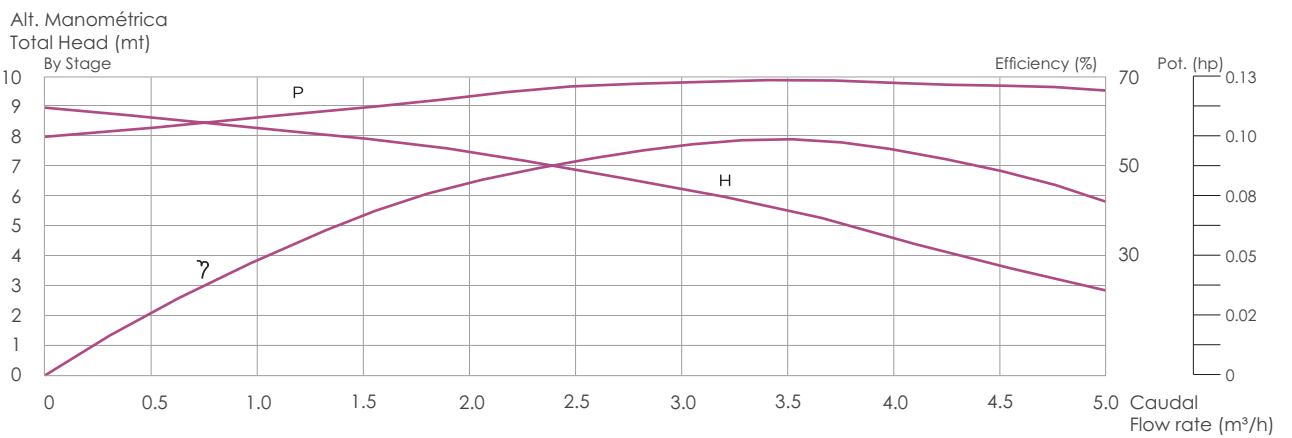
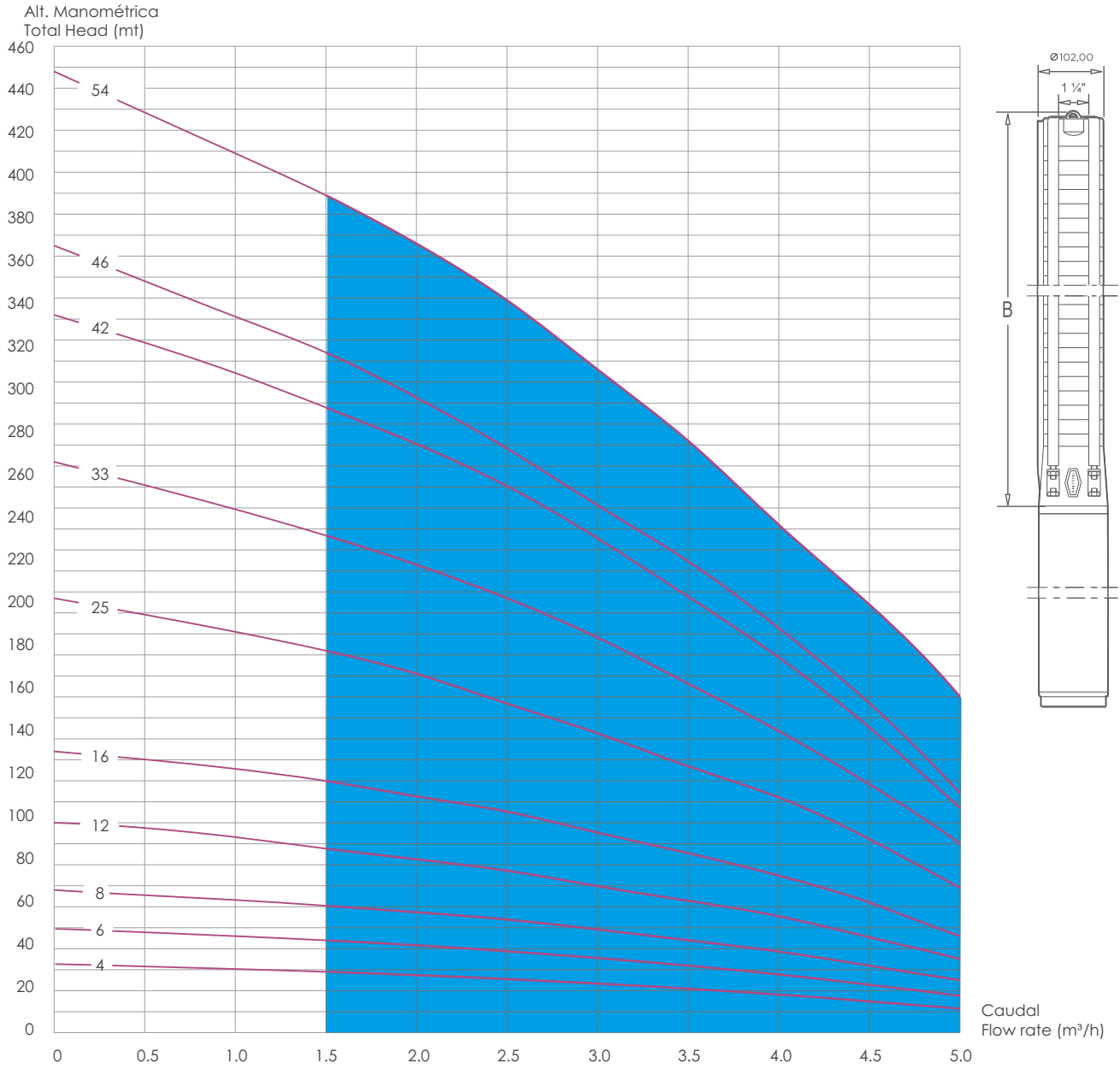
Saída / Outlet 1 1/4" Modelo / Model Tipo / Type	Motor		Altura Manométrica Total Head (m)	Caudal / Flow Rate													Comp. (B) Length (mm)	Peso (B) Weight (Kg)
	KW	HP		0	0.3	0.6	0.9	1.2	1.5	1.8	2.1	2.4	2.7	3	3.3			
	m³/h																	
BF 3.3 S 4	0,37	0,5		33	31	29	27	26	25	23	22	20	17	14	10	245	2,4	
BF 3.3 S 6	0,55	0,75		49	46	43	41	39	37	35	36	30	26	21	16	285	2,7	
BF 3.3 S 9	0,75	1		74	69	65	62	58	55	52	49	44	39	31	23	345	3,2	
BF 3.3 S 13	1,1	1,5		105	100	94	90	86	82	77	72	64	55	47	37	425	3,9	
BF 3.3 S 18	1,5	2		148	141	133	126	120	113	106	98	88	78	67	55	525	4,8	
BF 3.3 S 27	2,2	3		219	208	197	186	176	166	155	143	129	113	93	71	705	6,4	
BF 3.3 S 36	3	4		290	274	258	245	233	221	208	192	171	148	122	96	883	7,9	
BF 3.3 S 47	3,7	5		366	346	326	308	292	276	258	235	206	177	145	106	1105	9,9	
BF 3.3 S 56	4	5,5		440	413	389	368	348	329	308	283	252	216	178	137	1285	11,4	
BF 3.3 S 65	5,5	7,5		512	483	459	436	415	392	365	332	295	256	215	164	1465	13,0	

Comprimento e peso (B) referem-se à o Hidráulico.

Length and weight (B) refer to hydraulic part.

# BF 5 S - 60 Hz

BF Pumps

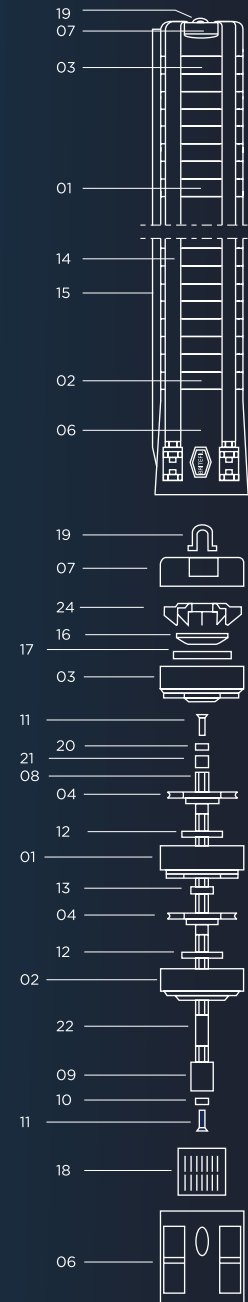




# BF 5 S - 60 Hz

BF Pumps

pos.	Todos os componentes são feitos de aço inoxidável all components are made of stainless steel		Material
	Descrição	Description	
01	difusor	diffuser	AISI 304 [EN 1.4301] / 316[EN 1.4401]
02	difusor inferior com suporte de rede	lower diffuser with suction strainer support	AISI 304 [EN 1.4301] / 316[EN 1.4401]
03	difusor superior	top diffuser	AISI 304 [EN 1.4301] / 316[EN 1.4401]
04	turbina	impeller	AISI 304 [EN 1.4301] / 316[EN 1.4401]
06	acoplamento do motor	motor coupling flange - suction corp	AISI 304 [EN 1.4301] / 316[EN 1.4401]
07	saída com argolas	discharge casing with two security rings	AISI 304 [EN 1.4301] / 316[EN 1.4401]
08	veio	shaft	AISI 304 [EN 1.4301] / 316[EN 1.4401]
09	cardan (ligações do veio do hidráulico ao veio do motor)	coupling (shaft pump end / shaft motor)	AISI 304 [EN 1.4301] / 316[EN 1.4401]
10	anilha inferior	lower washer	AISI 304 [EN 1.4301] / 316[EN 1.4401]
11	parafuso	screw	AISI 304 [EN 1.4301] / 316[EN 1.4401]
12	retentor da turbina	impeller fencer	NBR
13	hidroluva	shaft bearing	NBR
14	cintas de aperto	fitting belts	AISI 304 [EN 1.4301] / 316[EN 1.4401]
15	calha do cabo	cable guard	AISI 304 [EN 1.4301] / 316[EN 1.4401]
16	válvula	valve	AISI 304 [EN 1.4301] / 316[EN 1.4401]
17	retentor da válvula	valve fencer	AISI 304 [EN 1.4301] / 316[EN 1.4401]
18	rede de aspiração	suction strainer	AISI 304 [EN 1.4301] / 316[EN 1.4401]
19	argola de segurança	security ring	AISI 304 [EN 1.4301] / 316[EN 1.4401]
20	Anilha superior	top washer	AISI 304 [EN 1.4301] / 316[EN 1.4401]
21	casquilho do topo	top bush	AISI 304 [EN 1.4301] / 316[EN 1.4401]
22	casquilho de baixo	lower bush	AISI 304 [EN 1.4301] / 316[EN 1.4401]
24	aranha (guia de válvulas)	spider (valve guide)	AISI 304 [EN 1.4301] / 316[EN 1.4401]



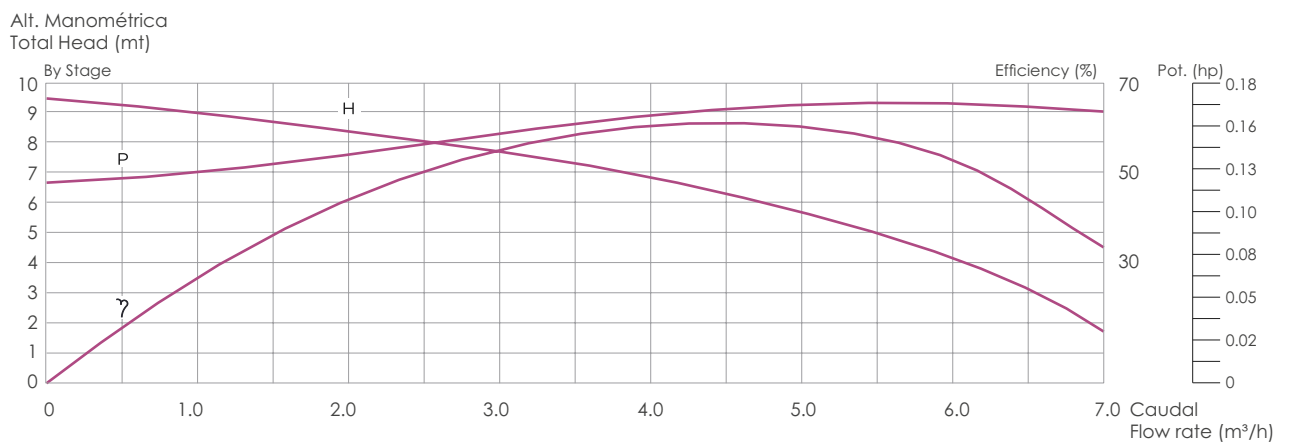
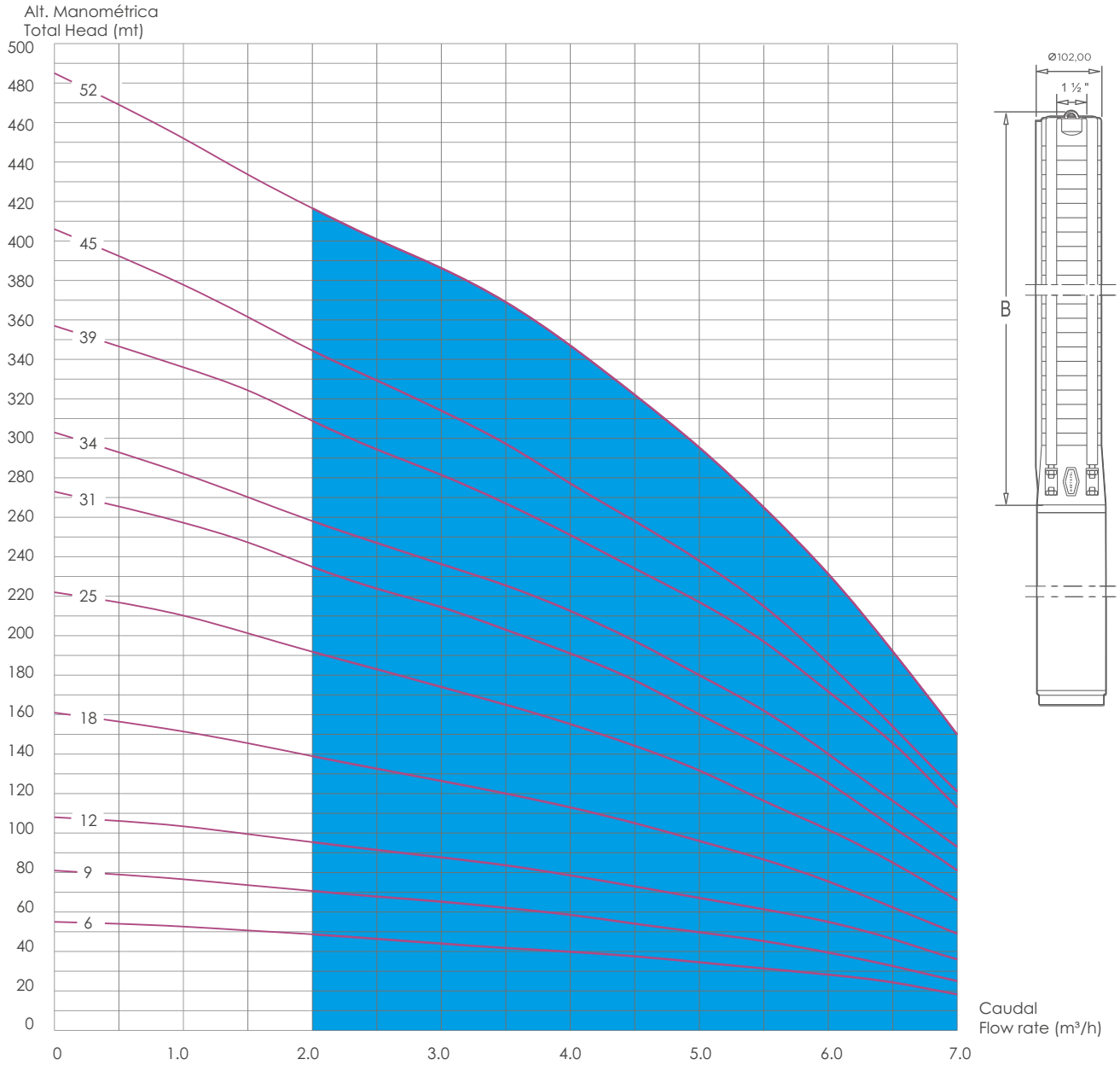
Saída / Outlet 1 1/4" Modelo / Model Tipo / Type	Motor		Altura Manométrica Total Head (m)	Caudal / Flow Rate												Comp. (B) Length (mm)	Peso (B) Weight (Kg)
				KW		HP		0	0.5	1.0	1.5	2.0	2.5	3.0	3.5		
BF 5 S 4	0,37	0,5		34	33	32	30	29	27	25	22	19	16	13	270	3,3	
BF 5 S 6	0,55	0,75		51	49	47	45	43	40	37	33	29	24	19	320	4,0	
BF 5 S 8	0,75	1		68	66	63	60	57	54	49	44	39	32	25	370	4,7	
BF 5 S 12	1,1	1,5		100	98	93	88	83	77	70	63	55	45	35	470	6,2	
BF 5 S 16	1,5	2		131	130	126	120	113	105	95	86	75	62	46	570	7,6	
BF 5 S 25	2,2	3		207	199	191	182	171	157	143	127	112	92	69	795	10,9	
BF 5 S 33	3	4		272	261	249	237	223	207	188	166	144	118	90	995	13,8	
BF 5 S 42	3,7	5		342	329	314	298	281	260	236	208	179	145	107	1220	17,1	
BF 5 S 46	4	5,5		375	358	341	324	303	278	251	225	193	157	114	1320	18,5	
BF 5 S 54	5,5	7,5		458	439	419	399	376	349	316	282	242	204	160	1520	21,4	

Comprimento e peso (B) referem-se à o Hidráulico.

Length and weight (B) refer to hydraulic part.

# BF 7 S - 60 Hz

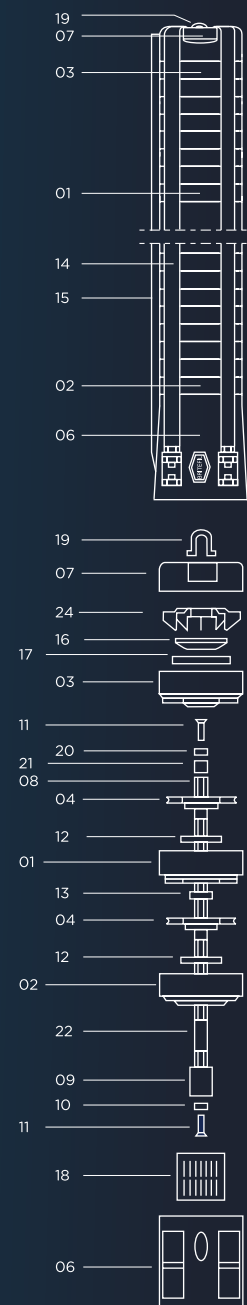
BF Pumps



# BF 7 S - 60 Hz

BF Pumps

pos.	Todos os componentes são feitos de aço inoxidável all components are made of stainless steel		Material
	Descrição	Description	
01		difusor   diffuser	AISI 304 [EN 1.4301] / 316[EN 1.4401]
02		difusor inferior com suporte de rede lower diffuser with suction strainer support	AISI 304 [EN 1.4301] / 316[EN 1.4401]
03		difusor superior   top diffuser	AISI 304 [EN 1.4301] / 316[EN 1.4401]
04		turbina   impeller	AISI 304 [EN 1.4301] / 316[EN 1.4401]
06		acoplamento do motor   motor coupling flange - suction corp	AISI 304 [EN 1.4301] / 316[EN 1.4401]
07		saída com argolas   discharge casing with two security rings	AISI 304 [EN 1.4301] / 316[EN 1.4401]
08		veio   shaft	AISI 304 [EN 1.4301] / 316[EN 1.4401]
09		cardan (ligações do veio do hidráulico ao veio do motor) coupling (shaft pump end / shaft motor)	AISI 304 [EN 1.4301] / 316[EN 1.4401]
10		anilha inferior   lower washer	AISI 304 [EN 1.4301] / 316[EN 1.4401]
11		parafuso   screw	AISI 304 [EN 1.4301] / 316[EN 1.4401]
12		retentor da turbina   impeller fencer	NBR
13		hidroluva   shaft bearing	NBR
14		cintas de aperto   fitting belts	AISI 304 [EN 1.4301] / 316[EN 1.4401]
15		calha do cabo   cable guard	AISI 304 [EN 1.4301] / 316[EN 1.4401]
16		válvula   valve	AISI 304 [EN 1.4301] / 316[EN 1.4401]
17		retentor da válvula   valve fencer	AISI 304 [EN 1.4301] / 316[EN 1.4401]
18		rede de aspiração   suction strainer	AISI 304 [EN 1.4301] / 316[EN 1.4401]
19		argola de segurança   security ring	AISI 304 [EN 1.4301] / 316[EN 1.4401]
20		Anilha superior   top washer	AISI 304 [EN 1.4301] / 316[EN 1.4401]
21		casquilho do topo   top bush	AISI 304 [EN 1.4301] / 316[EN 1.4401]
22		casquilho de baixo   lower bush	AISI 304 [EN 1.4301] / 316[EN 1.4401]
24		aranha (guia de válvulas)   spider (valve guide)	AISI 304 [EN 1.4301] / 316[EN 1.4401]



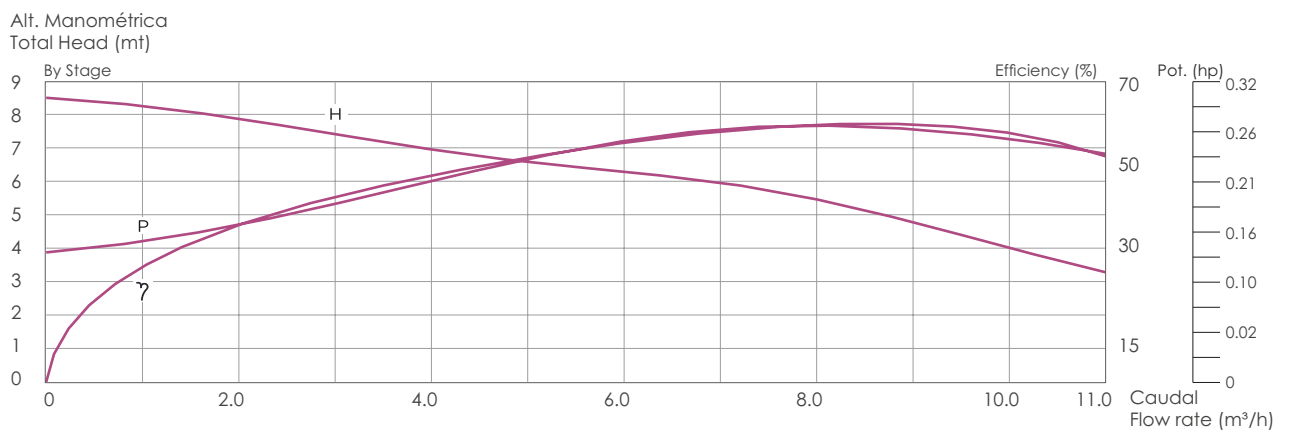
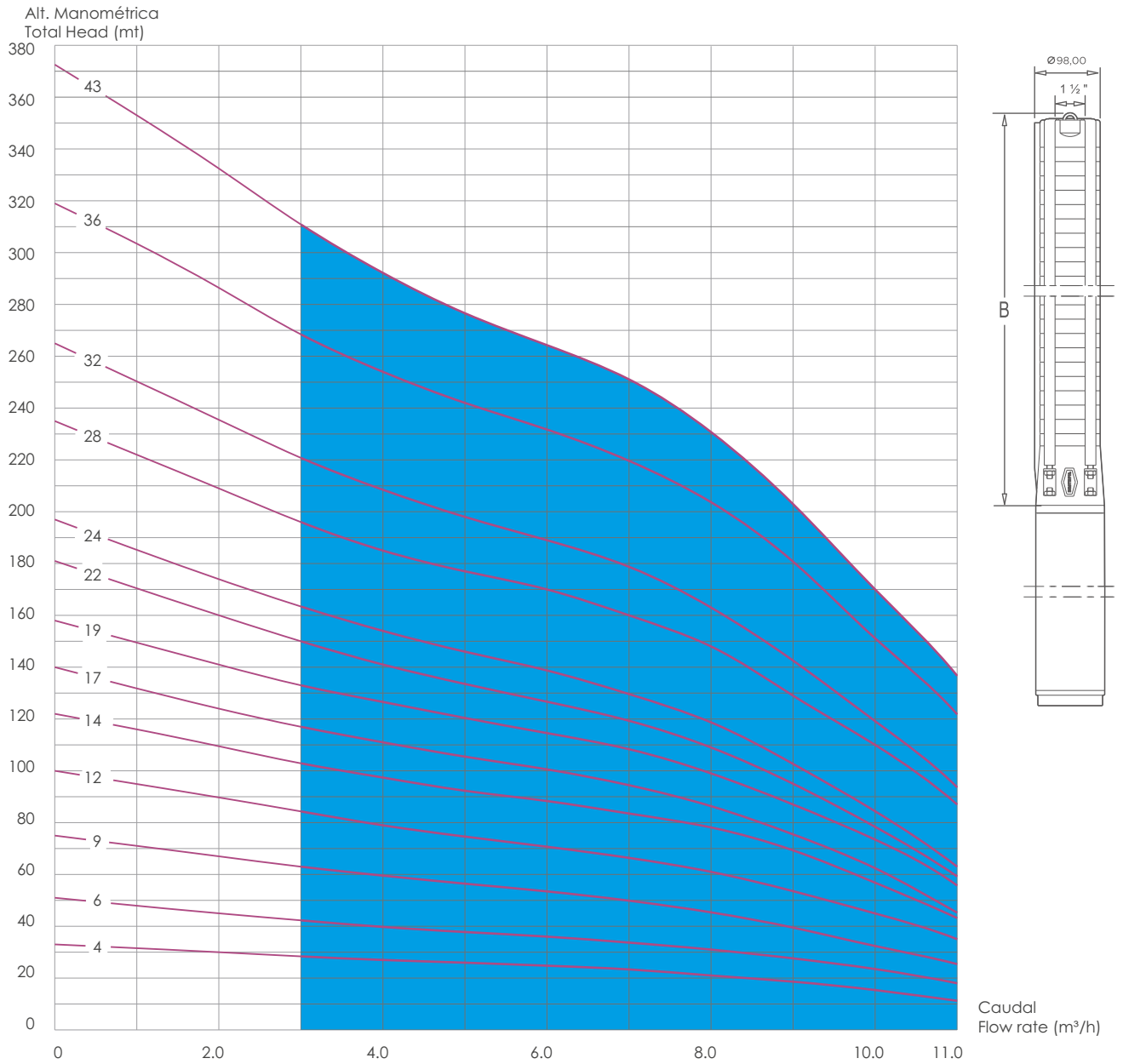
Saída / Outlet 1½"	Motor		Altura Manométrica Total Head (m)	Caudal / Flow Rate										Comp. (B) Length (mm)	Peso (B) Weight (Kg)	
				Modelo / Model		m³/h	0	1.0	2.0	3.0	4.0	5.0	6.0			7.0
				Tipo / Type	HP											
BF 7 S 6	0,75	1	Altura Manométrica Total Head (m)		55	53	49	44	40	35	28	18	320	4,0		
BF 7 S 9	1,1	1,5		81	77	71	65	59	50	39	25	395	5,1			
BF 7 S 12	1,5	2		108	103	95	88	79	67	55	36	470	6,2			
BF 7 S 18	2,2	3		161	151	139	126	113	96	76	49	620	8,4			
BF 7 S 25	3	4		222	210	192	174	155	132	102	66	795	10,9			
BF 7 S 31	3,7	5		273	257	235	215	191	160	125	81	945	13,1			
BF 7 S 34	4	5,5		303	282	258	236	213	180	140	93	1020	14,2			
BF 7 S 39	5,5	7,5		357	336	309	282	251	217	172	113	1145	16,0			
BF 7 S 45	5,5	7,5		406	378	345	314	277	238	186	121	1295	18,2			
BF 7 S 52	7,5	10		485	452	417	386	347	295	231	150	1470	20,7			

Comprimento e peso (B) referem-se à o Hidráulico.

Length and weight (B) refer to hydraulic part.

# BF 11 S - 60 Hz

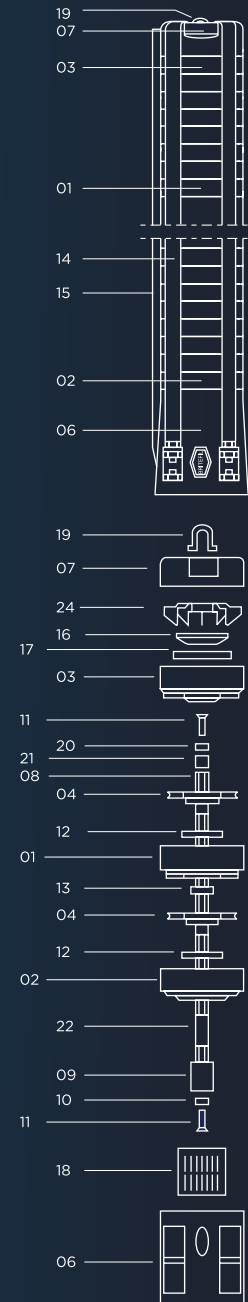
BF Pumps



# BF 11 S - 60 Hz

BF Pumps

pos.	Todos os componentes são feitos de aço inoxidável all components are made of stainless steel		Material
	Descrição	Description	
01		difusor   diffuser	AISI 304 [EN 1.4301] / 316[EN 1.4401]
02		difusor inferior com suporte de rede lower diffuser with suction strainer support	AISI 304 [EN 1.4301] / 316[EN 1.4401]
03		difusor superior   top diffuser	AISI 304 [EN 1.4301] / 316[EN 1.4401]
04		turbina   impeller	AISI 304 [EN 1.4301] / 316[EN 1.4401]
06		acoplamento do motor   motor coupling flange - suction corp	AISI 304 [EN 1.4301] / 316[EN 1.4401]
07		saída com argolas   discharge casing with two security rings	AISI 304 [EN 1.4301] / 316[EN 1.4401]
08		veio   shaft	AISI 304 [EN 1.4301] / 316[EN 1.4401]
09		cardan (ligações do veio do hidráulico ao veio do motor) coupling (shaft pump end / shaft motor)	AISI 304 [EN 1.4301] / 316[EN 1.4401]
10		anilha inferior   lower washer	AISI 304 [EN 1.4301] / 316[EN 1.4401]
11		parafuso   screw	AISI 304 [EN 1.4301] / 316[EN 1.4401]
12		retentor da turbina   impeller fencer	NBR
13		hidroluva   shaft bearing	NBR
14		cintas de aperto   fitting belts	AISI 304 [EN 1.4301] / 316[EN 1.4401]
15		calha do cabo   cable guard	AISI 304 [EN 1.4301] / 316[EN 1.4401]
16		válvula   valve	AISI 304 [EN 1.4301] / 316[EN 1.4401]
17		retentor da válvula   valve fencer	AISI 304 [EN 1.4301] / 316[EN 1.4401]
18		rede de aspiração   suction strainer	AISI 304 [EN 1.4301] / 316[EN 1.4401]
19		argola de segurança   security ring	AISI 304 [EN 1.4301] / 316[EN 1.4401]
20		Anilha superior   top washer	AISI 304 [EN 1.4301] / 316[EN 1.4401]
21		casquilho do topo   top bush	AISI 304 [EN 1.4301] / 316[EN 1.4401]
22		casquilho de baixo   lower bush	AISI 304 [EN 1.4301] / 316[EN 1.4401]
24		aranha (guia de válvulas)   spider (valve guide)	AISI 304 [EN 1.4301] / 316[EN 1.4401]



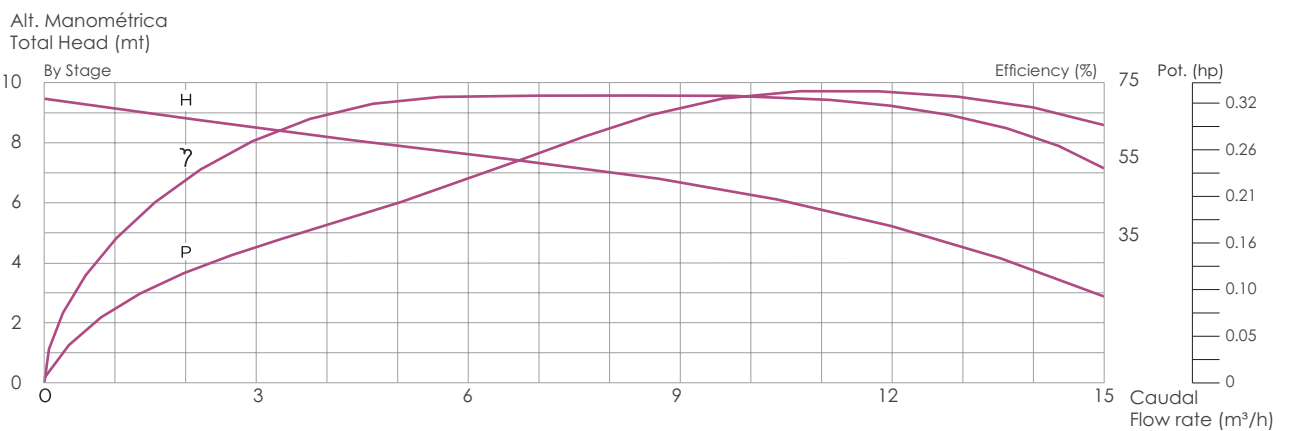
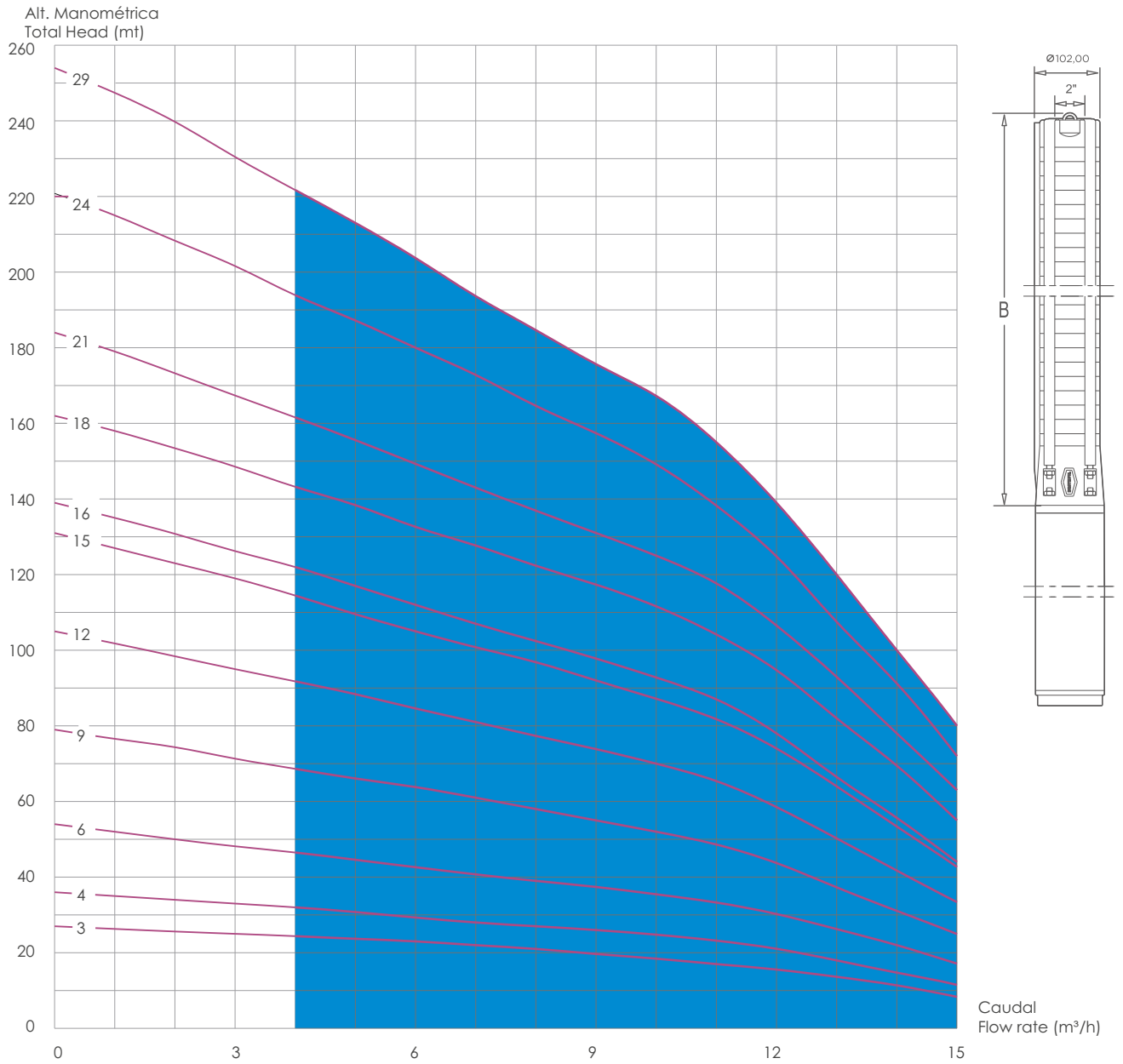
Saída / Outlet 1½"	Motor		Altura Manométrica Total Head (m)	Caudal / Flow Rate												Comp. (B) Length (mm)	Peso (B) Weight (Kg)	
				Modelo / Model	KW	HP	m³/h	0	1.0	2.0	3.0	4.0	5.0	6.0	7.0			8.0
BF 11 S 4		0,75	1		33	32	30	28	27	26	25	23	21	19	15	11	329	3,0
BF 11 S 6		1,1	1,5		51	48	45	42	40	38	36	34	31	28	24	18	403	3,7
BF 11 S 9		1,5	2		75	71	67	63	60	56	54	50	45	40	32	25	514	4,8
BF 11 S 12		2,2	3		100	95	90	84	79	75	71	67	61	54	45	35	625	5,9
BF 11 S 14		3	4		122	116	110	103	97	92	88	84	78	69	57	43	699	6,6
BF 11 S 17		3	4		140	132	124	117	111	106	101	94	86	76	62	45	810	7,7
BF 11 S 19		3,7	5		158	150	141	133	127	120	115	108	99	87	74	56	884	8,5
BF 11 S 22		3,7	5		181	170	160	150	141	134	127	119	109	95	78	59	995	9,6
BF 11 S 24		4	5,5		197	185	174	163	154	146	139	130	119	103	84	63	1069	10,3
BF 11 S 28		5,5	7,5		235	222	209	196	185	177	170	160	148	129	110	87	1217	11,7
BF 11 S 32		5,5	7,5		265	250	236	221	209	198	189	179	163	143	119	94	1365	13,2
BF 11 S 38		7,5	10		319	304	286	269	254	242	232	220	204	181	151	122	1587	15,4
BF 11 S 43		7,5	10		373	353	333	311	292	277	264	251	231	203	170	137	1772	17,2

Comprimento e peso (B) referem-se à o Hidráulico.

Length and weight (B) refer to hydraulic part.

# BF 15 S - 60 Hz

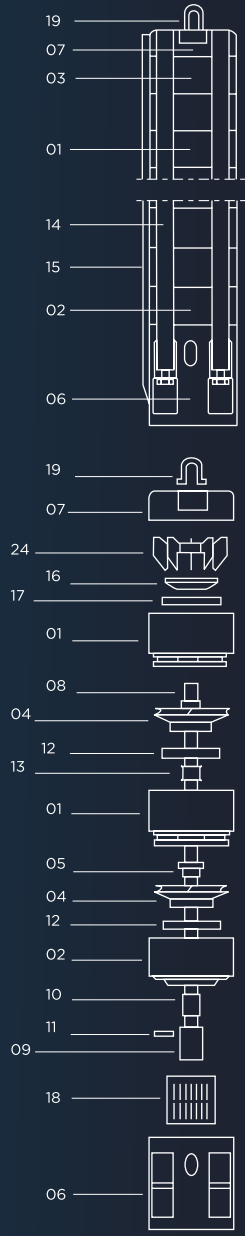
BF Pumps



# BF 15 S - 60 Hz

BF Pumps

pos.	Todos os componentes são feitos de aço inoxidável all components are made of stainless steel		Material
	Descrição   Description		
01	difusor   diffuser		AISI 304 [EN 1.4301] / 316[EN 1.4401]
02	difusor inferior com suporte de rede lower diffuser with suction strainer support		AISI 304 [EN 1.4301] / 316[EN 1.4401]
03	difusor superior   top diffuser		AISI 304 [EN 1.4301] / 316[EN 1.4401]
04	turbina   impeller		AISI 304 [EN 1.4301] / 316[EN 1.4401]
05	casquilho cónico com porca   conical bush with nut		AISI 304 [EN 1.4301] / 316[EN 1.4401]
06	acoplamento do motor   motor coupling flange - suction corp		AISI 304 [EN 1.4301] / 316[EN 1.4401]
07	saída com argolas   discharge casing with two security rings		AISI 304 [EN 1.4301] / 316[EN 1.4401]
08	veio   shaft		AISI 304 [EN 1.4301] / 316[EN 1.4401]
09	cardan (ligações do veio do hidráulico ao veio do motor) coupling (shaft pump end / shaft motor)		AISI 304 [EN 1.4301] / 316[EN 1.4401]
10	casquilho cónico para acoplamento   conical bush for coupling		AISI 304 [EN 1.4301] / 316[EN 1.4401]
11	braçadeira de acoplamento   coupling clamp		NBR
12	retentor da turbina   impeller fencer		NBR
13	hidroluva   shaft bearing		AISI 304 [EN 1.4301] / 316[EN 1.4401]
14	cintas de aperto   fitting belts		AISI 304 [EN 1.4301] / 316[EN 1.4401]
15	calha do cabo   cable guard		AISI 304 [EN 1.4301] / 316[EN 1.4401]
16	válvula   valve		AISI 304 [EN 1.4301] / 316[EN 1.4401]
17	retentor da válvula   valve fencer		AISI 304 [EN 1.4301] / 316[EN 1.4401]
18	rede de aspiração   suction strainer		AISI 304 [EN 1.4301] / 316[EN 1.4401]
19	argola de segurança   security ring		AISI 304 [EN 1.4301] / 316[EN 1.4401]
24	aranha (guia de válvulas)   spider (valve guide)		AISI 304 [EN 1.4301] / 316[EN 1.4401]

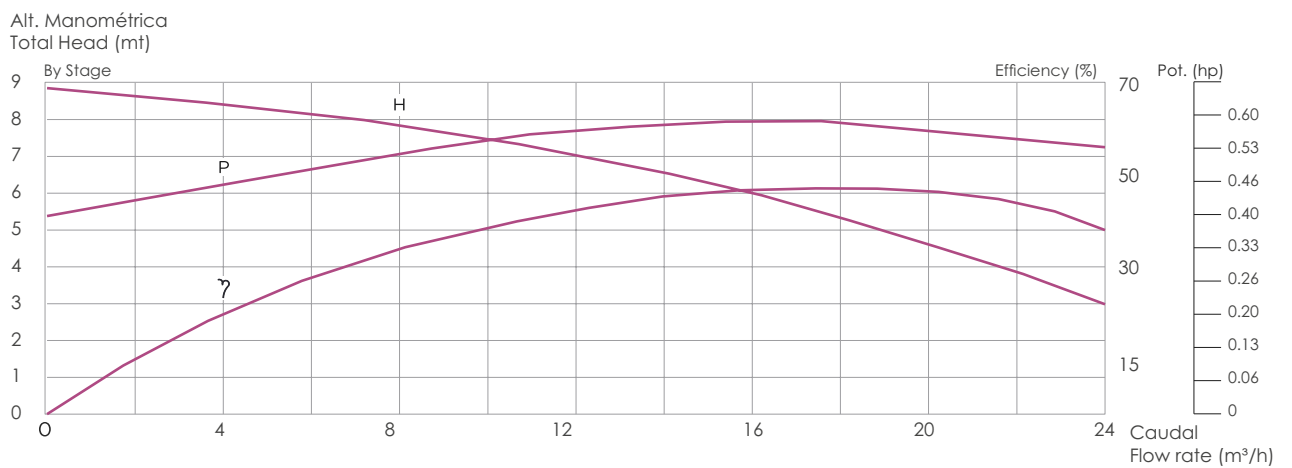
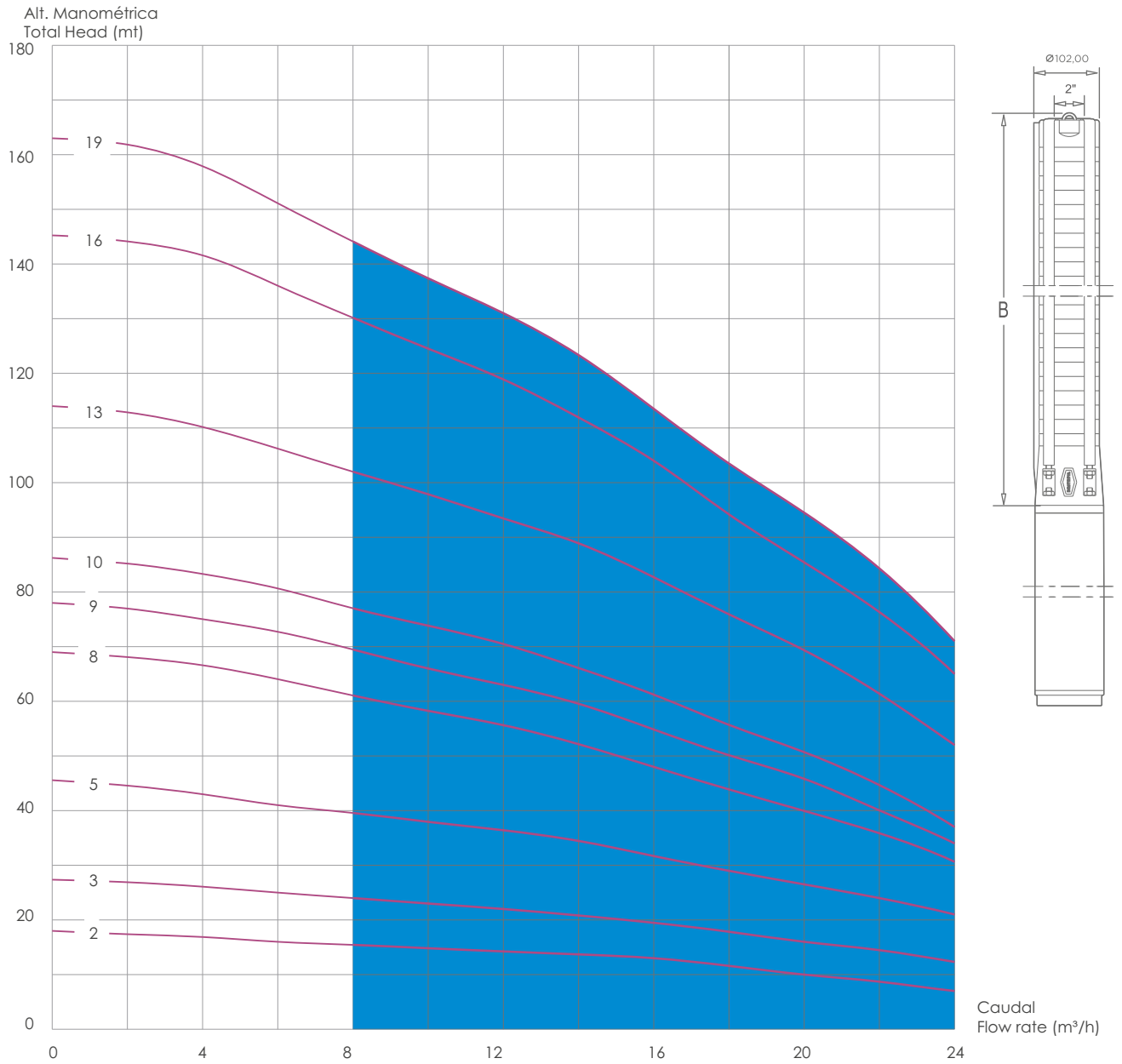


Saída / Outlet 2" Modelo / Model Tipo / Type	Motor		Caudal / Flow Rate m³/h	Caudal / Flow Rate												Comp. (B) Length (mm)	Peso (B) Weight (Kg)
	KW	HP		0	1.5	3.0	4.0	4.5	6.0	7.5	9.0	10.5	12.0	13.5	15.0		
BF 15 S 3	0,75	1	Altura Manométrica Total Head (m)	27	26	25	24	24	23	22	20	18	16	13	8	309	3,7
BF 15 S 4	1,1	1,5		36	35	33	32	31	29	28	26	24	21	16	12	351	4,3
BF 15 S 6	1,5	2		54	60	48	47	46	43	40	37	34	30	24	17	435	5,6
BF 15 S 9	2,2	3		79	76	71	69	67	64	60	55	50	44	34	25	561	7,4
BF 15 S 12	3	4		105	100	95	92	90	85	79	74	68	59	46	33	687	9,2
BF 15 S 15	3,7	5		131	125	119	115	112	105	99	92	85	74	59	43	813	11,1
BF 15 S 16	4	5,5		139	133	126	122	120	112	105	98	90	78	61	44	855	11,7
BF 15 S 18	5,5	7,5		162	153	149	143	141	133	125	117	108	95	76	55	939	12,9
BF 15 S 21	5,5	7,5		184	176	167	162	159	149	140	131	122	107	86	63	1065	14,7
BF 15 S 24	7,5	10		221	208	202	194	191	180	169	157	144	125	99	42	1191	16,5
BF 15 S 29	7,5	10		254	244	231	222	217	204	189	176	162	139	110	80	1401	18,7

Comprimento e peso (B) referem-se à o Hidráulico.  
Length and weight (B) refer to hydraulic part.

# BF 24 S - 60 Hz

BF Pumps

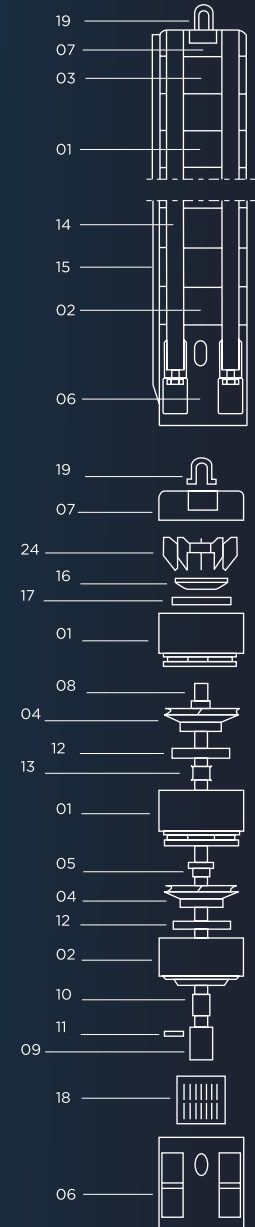




# BF 24 S - 60 Hz

BF Pumps

pos.	Todos os componentes são feitos de aço inoxidável all components are made of stainless steel		Material
	Descrição   Description		
01	difusor   diffuser		AISI 304 [EN 1.4301] / 316[EN 1.4401]
02	difusor inferior com suporte de rede lower diffuser with suction strainer support		AISI 304 [EN 1.4301] / 316[EN 1.4401]
03	difusor superior   top diffuser		AISI 304 [EN 1.4301] / 316[EN 1.4401]
04	turbina   impeller		AISI 304 [EN 1.4301] / 316[EN 1.4401]
05	casquilho cónico com porca   conical bush with nut		AISI 304 [EN 1.4301] / 316[EN 1.4401]
06	acoplamento do motor   motor coupling flange - suction corp		AISI 304 [EN 1.4301] / 316[EN 1.4401]
07	saída com argolas   discharge casing with two security rings		AISI 304 [EN 1.4301] / 316[EN 1.4401]
08	veio   shaft		AISI 304 [EN 1.4301] / 316[EN 1.4401]
09	cardan (ligações do veio do hidráulico ao veio do motor) coupling (shaft pump end / shaft motor)		AISI 304 [EN 1.4301] / 316[EN 1.4401]
10	casquilho cónico para acoplamento   conical bush for coupling		AISI 304 [EN 1.4301] / 316[EN 1.4401]
11	braçadeira de acoplamento   coupling clamp		NBR
12	retentor da turbina   impeller fencer		NBR
13	hidroluva   shaft bearing		AISI 304 [EN 1.4301] / 316[EN 1.4401]
14	cintas de aperto   fitting belts		AISI 304 [EN 1.4301] / 316[EN 1.4401]
15	calha do cabo   cable guard		AISI 304 [EN 1.4301] / 316[EN 1.4401]
16	válvula   valve		AISI 304 [EN 1.4301] / 316[EN 1.4401]
17	retentor da válvula   valve fencer		AISI 304 [EN 1.4301] / 316[EN 1.4401]
18	rede de aspiração   suction strainer		AISI 304 [EN 1.4301] / 316[EN 1.4401]
19	argola de segurança   security ring		AISI 304 [EN 1.4301] / 316[EN 1.4401]
24	aranha (guia de válvulas)   spider (valve guide)		AISI 304 [EN 1.4301] / 316[EN 1.4401]



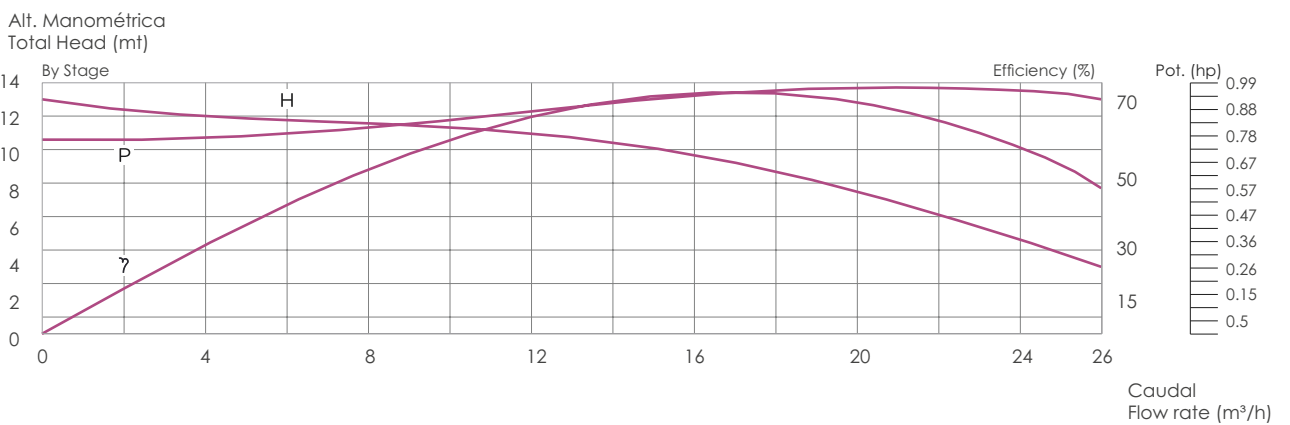
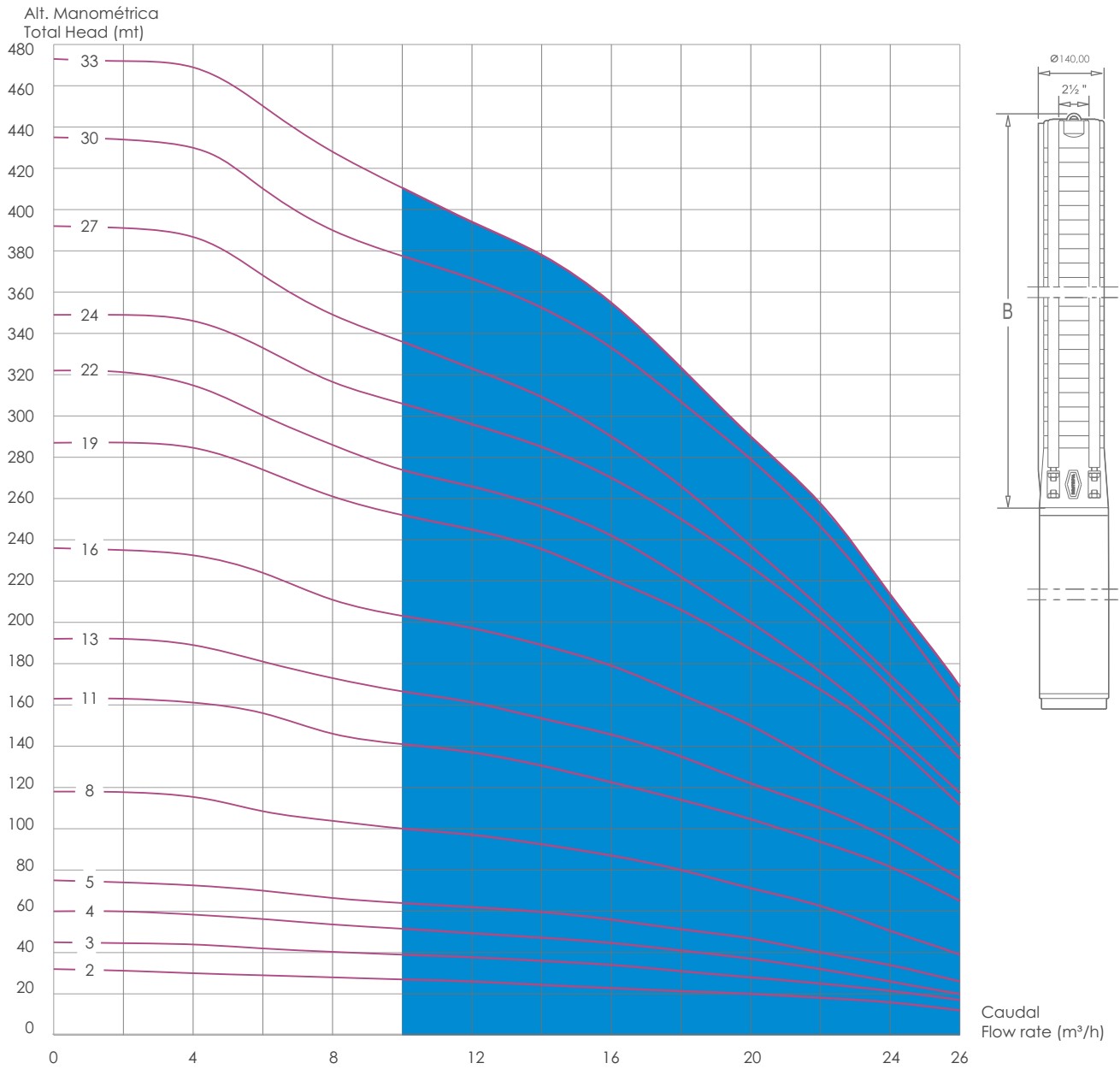
Saída / Outlet 2" Modelo / Model Tipo / Type	Motor		Altura Manométrica Total Head (m)	Caudal / Flow Rate													Comp. (B) Length (mm)	Peso (B) Weight (Kg)
				0	2.0	4.0	6.0	8.0	10.0	12.0	14.0	16.0	18.0	20.0	22.0	24.0		
	KW	HP																
BF 24 S 2	1,1	1,5	Altura Manométrica Total Head (m)	18	17	17	16	15	15	14	14	13	12	10	9	7	339	3,5
BF 24 S 3	1,5	2		27	27	20	25	24	23	22	21	20	18	16	15	12	404	4,3
BF 24 S 5	2,2	3		46	45	43	41	40	38	36	35	32	29	27	24	21	534	5,9
BF 24 S 8	3	4		69	68	67	64	61	58	56	52	48	44	40	36	31	729	8,3
BF 24 S 9	3,7	5		78	77	75	73	70	66	63	60	55	50	46	40	34	794	9,1
BF 24 S 10	4	5,5		86	85	83	91	77	74	71	66	61	56	51	45	37	859	9,9
BF 24 S 13	5,5	7,5		114	113	110	106	102	98	93	89	83	76	69	61	52	1054	12,2
BF 24 S 16	7,5	10		145	144	142	136	130	125	119	112	104	94	85	76	65	1249	14,6
BF 24 S 19	7,5	10		163	162	158	151	144	137	131	123	114	104	95	84	71	1444	17,0

Comprimento e peso (B) referem-se à o Hidráulico.

Length and weight (B) refer to hydraulic part.

# BF 26 S - 60 Hz

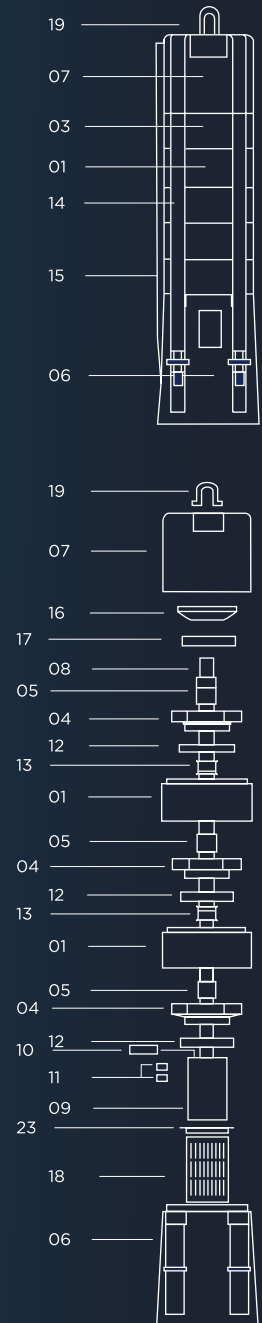
BF Pumps



# BF 26 S - 60 Hz

BF Pumps

pos.	Todos os componentes são feitos de aço inoxidável all components are made of stainless steel		Material
	Descrição   Description		
01	difusor   diffuser		AISI 304 [EN 1.4301] / 316[EN 1.4401]
03	difusor superior   top diffuser		AISI 304 [EN 1.4301] / 316[EN 1.4401]
04	turbina   impeller		AISI 304 [EN 1.4301] / 316[EN 1.4401]
05	casquilho cónico com porca   conical bush with nut		AISI 304 [EN 1.4301] / 316[EN 1.4401]
06	acoplamento do motor 6" motor coupling flange - suction corp for 6" motor		AISI 304 [EN 1.4301] / 316[EN 1.4401]
06	acoplamento do motor 4" motor coupling flange - suction corp for 4" motor		AISI 304 [EN 1.4301] / 316[EN 1.4401]
06	acoplamento do motor Start / Delta motor coupling flange - suction corp for Start / Delta		AISI 304 [EN 1.4301] / 316[EN 1.4401]
07	saída com argola discharge casing with one security rings		AISI 304 [EN 1.4301] / 316[EN 1.4401]
07	saída com argolas discharge casing with two security rings		AISI 304 [EN 1.4301] / 316[EN 1.4401]
08	veio   shaft		AISI 304 [EN 1.4301] / 316[EN 1.4401]
09	cardan (ligações do veio do hidráulico ao veio do motor) coupling (shaft pump end / shaft motor)		AISI 304 [EN 1.4301] / 316[EN 1.4401]
10	braçadeira de acoplamento   coupling clamp		AISI 304 [EN 1.4301] / 316[EN 1.4401]
11	parafusos   screws		AISI 304 [EN 1.4301] / 316[EN 1.4401]
12	retentor da turbina   impeller fencer		NBR
13	hidroluva   shaft bearing		NBR
14	cintas de aperto   fitting belts		AISI 304 [EN 1.4301] / 316[EN 1.4401]
15	calha do cabo   cable guard		AISI 304 [EN 1.4301] / 316[EN 1.4401]
16	válvula   valve		AISI 304 [EN 1.4301] / 316[EN 1.4401]
17	retentor da válvula   valve fencer		AISI 304 [EN 1.4301] / 316[EN 1.4401]
18	rede de aspiração   suction strainer		AISI 304 [EN 1.4301] / 316[EN 1.4401]
19	argola de segurança   security ring		AISI 304 [EN 1.4301] / 316[EN 1.4401]
23	rede de aspiração   suction strainer washer		AISI 304 [EN 1.4301] / 316[EN 1.4401]



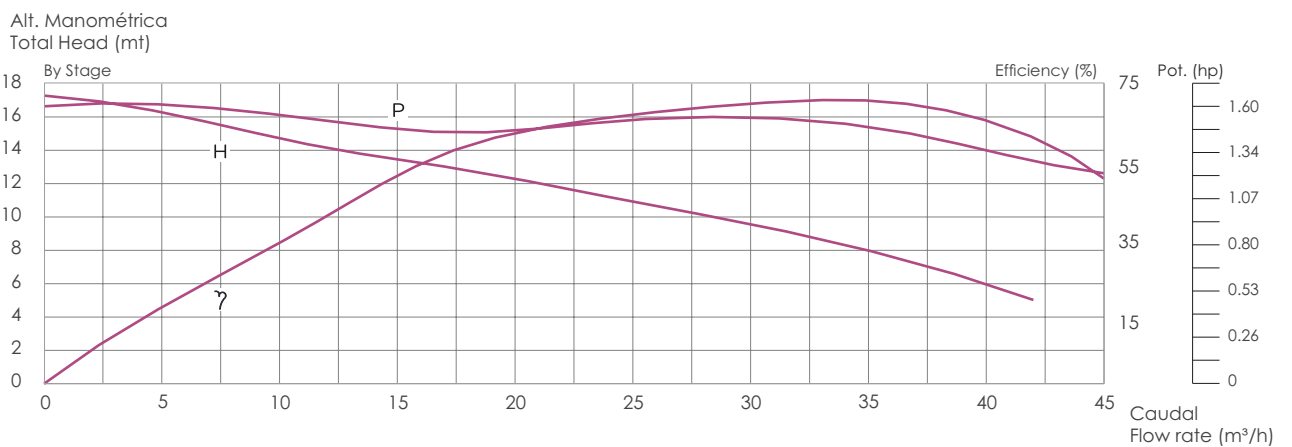
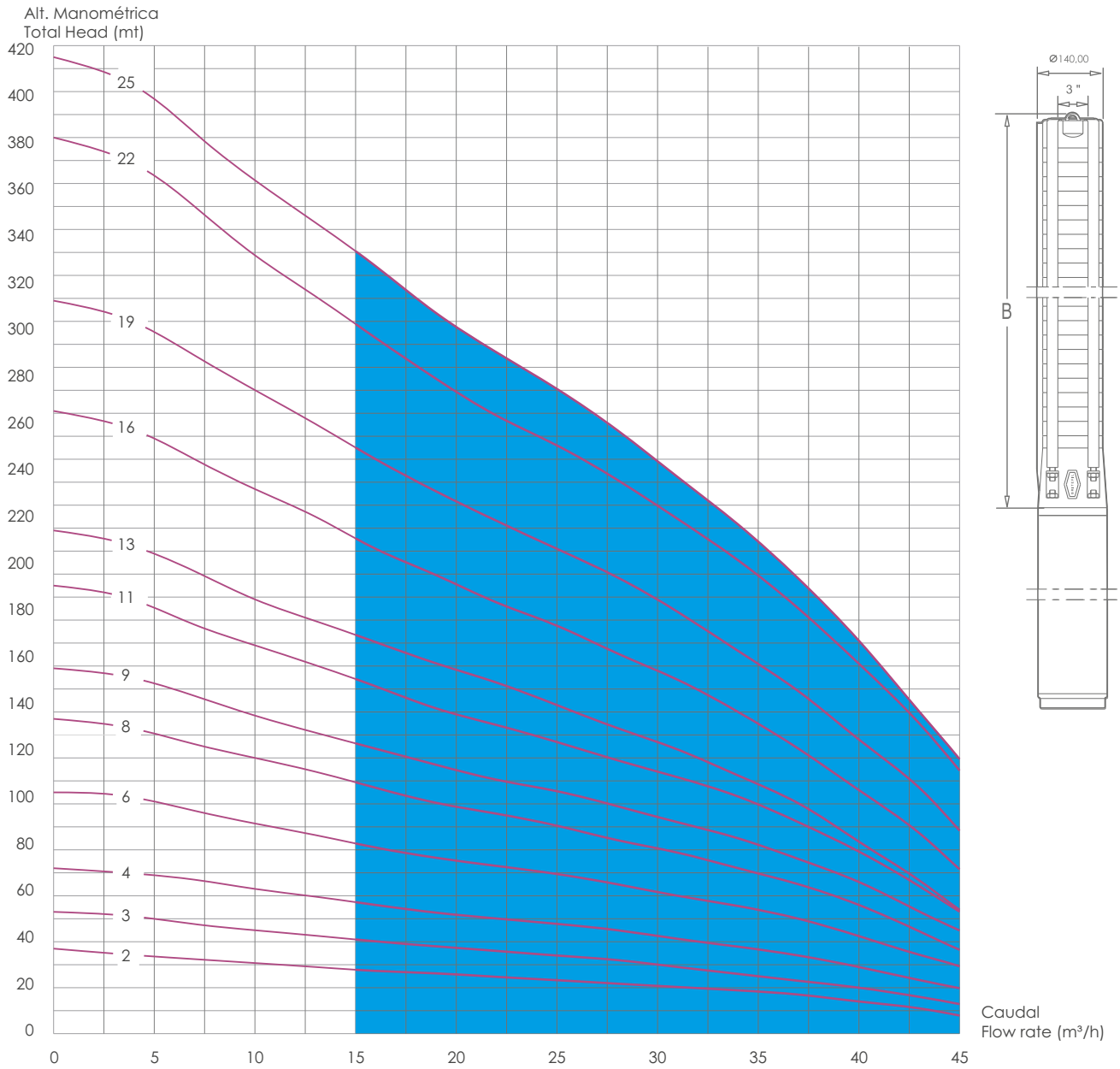
Saída / Outlet 2½"	Motor		Caudal / Flow Rate	Comp. (B)	Peso (B)
Tipo / Type	KW	HP	m³/h		
BF 26 S 2	1,5	2	32 31 30 29 28 27 26 24 23 21 20 18 16 12	335	5,8
BF 26 S 3	2,2	3	45 45 44 42 40 39 38 36 34 31 28 25 21 17	380	6,9
BF 26 S 4	3	4	60 60 58 56 54 52 49 47 45 41 37 32 26 20	425	8,0
BF 26 S 5	4	5	75 74 73 70 66 64 62 60 56 51 47 40 34 26	470	9,1
BF 26 S 8	5,5	7,5	118 118 115 108 104 100 97 92 87 80 71 63 51 39	605/628	12,4/15,4
BF 26 S 11	7,5	10	163 163 161 156 146 141 137 131 122 114 105 94 82 65	740/763	14,6/16,5
BF 26 S 13	9,3	12,5	192 192 189 181 173 167 161 153 146 135 122 110 95 76	853	18,7
BF 26 S 16	11	15	236 235 233 224 211 203 197 189 179 165 150 131 114 93	988	22,0
BF 26 S 19	15	20	287 287 285 274 161 252 245 236 221 206 187 167 143 112	1123	25,3
BF 26 S 22	15	20	322 321 315 300 286 274 266 256 242 222 200 176 148 117	1258	28,6
BF 26 S 24	18,5	25	349 349 346 333 317 306 296 285 270 250 227 200 169 134	1348	30,9
BF 26 S 27	18,5	25	392 391 387 368 349 336 323 309 290 266 237 207 175 140	1483	34,2
BF 26 S 30	22	30	435 434 430 410 390 378 367 352 333 307 279 247 206 161	1618	37,5
BF 26 S 33	22	30	473 472 469 450 428 410 394 378 355 323 290 258 213 169	1753	40,8

Comprimento e peso (B) referem-se à o Hidráulico.

Length and weight (B) refer to hydraulic part.

# BF 45 S - 60 Hz

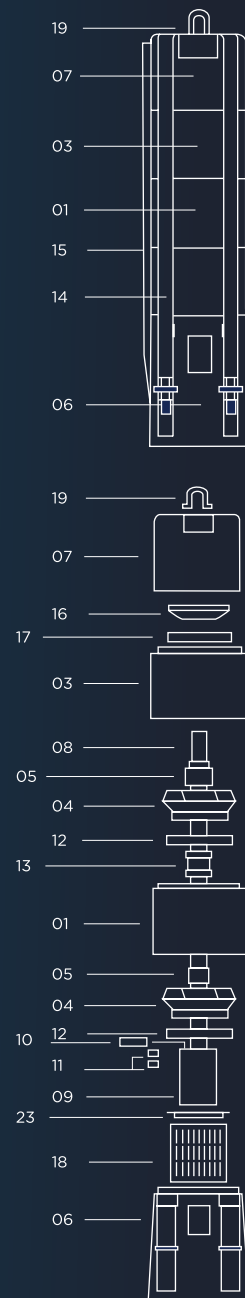
BF Pumps



# BF 45 S - 60 Hz

BF Pumps

pos.	Todos os componentes são feitos de aço inoxidável all components are made of stainless steel		Material
	Descrição   Description		
01	difusor   diffuser		AISI 304 [EN 1.4301] / 316[EN 1.4401]
03	difusor superior   top diffuser		AISI 304 [EN 1.4301] / 316[EN 1.4401]
04	turbina   impeller		AISI 304 [EN 1.4301] / 316[EN 1.4401]
05	casquilho cónico com porca   conical bush with nut		AISI 304 [EN 1.4301] / 316[EN 1.4401]
06	acoplamento do motor 6" motor coupling flange - suction corp for 6" motor		AISI 304 [EN 1.4301] / 316[EN 1.4401]
06	acoplamento do motor 4" motor coupling flange - suction corp for 4" motor		AISI 304 [EN 1.4301] / 316[EN 1.4401]
06	acoplamento do motor Start / Delta motor coupling flange - suction corp for Start / Delta		AISI 304 [EN 1.4301] / 316[EN 1.4401]
07	saída com argola discharge casing with one security rings		AISI 304 [EN 1.4301] / 316[EN 1.4401]
08	veio   shaft		AISI 304 [EN 1.4301] / 316[EN 1.4401]
09	cardan (ligações do veio do hidráulico ao veio do motor) coupling (shaft pump end / shaft motor)		AISI 304 [EN 1.4301] / 316[EN 1.4401]
10	braçadeira de acoplamento   coupling clamp		AISI 304 [EN 1.4301] / 316[EN 1.4401]
11	parafusos   screws		AISI 304 [EN 1.4301] / 316[EN 1.4401]
12	retentor da turbina   impeller fencer		NBR
13	hidroluva   shaft bearing		NBR
14	cintas de aperto   fitting belts		AISI 304 [EN 1.4301] / 316[EN 1.4401]
15	calha do cabo   cable guard		AISI 304 [EN 1.4301] / 316[EN 1.4401]
16	válvula   valve		AISI 304 [EN 1.4301] / 316[EN 1.4401]
17	retentor da válvula   valve fencer		AISI 304 [EN 1.4301] / 316[EN 1.4401]
18	rede de aspiração   suction strainer		AISI 304 [EN 1.4301] / 316[EN 1.4401]
19	argola de segurança   security ring		AISI 304 [EN 1.4301] / 316[EN 1.4401]
23	rede de aspiração   suction strainer washer		AISI 304 [EN 1.4301] / 316[EN 1.4401]



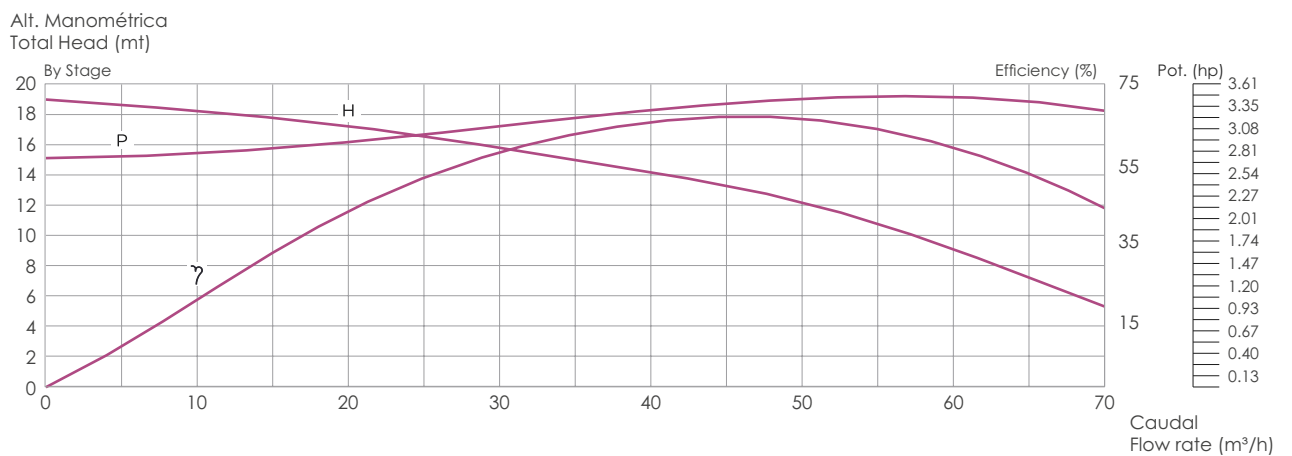
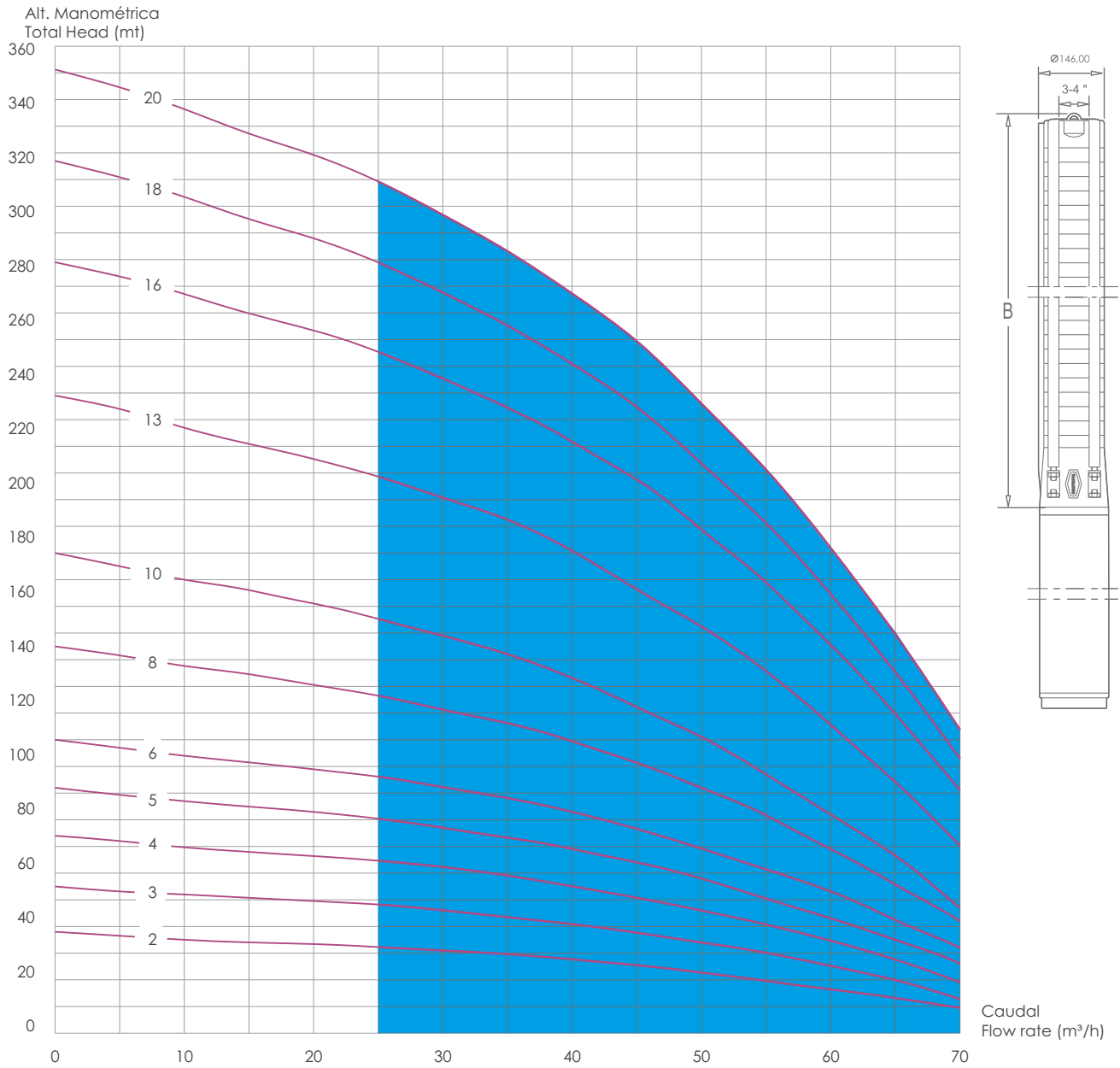
Saída / Outlet 3" Modelo / Model Tipo / Type	Motor		Altura Manométrica Total Head (m)	Caudal / Flow Rate											Comp. (B) Lenght (mm)	Peso (B) Weight (Kg)
	KW	HP		0	5.0	10.0	15.0	20.0	25.0	30.0	35.0	40.0	45.0			
BF 45 S 2	3	4	Altura Manométrica Total Head (m)	37	34	31	28	26	23	21	18	14	8	425	7,4	
BF 45 S 3	4	5		53	50	45	41	37	34	30	25	20	13	515	9,1	
BF 45 S 4	5,5	7,5		72	69	63	57	52	48	43	37	29	20	605/628	10,8/12,4	
BF 45 S 6	7,5	10		105	101	91	83	75	69	62	54	42	29	785/808	14,2/15,8	
BF 45 S 8	9,3	12,5		137	131	120	110	99	90	81	70	56	36	988	18,7	
BF 45 S 9	11	15		159	152	138	126	115	106	94	82	66	45	1078	20,4	
BF 45 S 11	15	20		195	185	169	154	139	127	114	100	79	53	1258	24,0	
BF 45 S 13	15	20		219	209	189	174	158	143	127	108	84	55	1438	27,3	
BF 45 S 16	18,5	25		271	259	237	216	196	178	158	135	106	72	1708	32,5	
BF 45 S 19	22	30		319	305	280	255	232	211	189	161	128	88	1978	37,9	
BF 45 S 22	30	40		390	373	389	309	279	256	230	199	161	115	2248	43,0	
BF 45 S 25	30	40		425	407	371	341	308	281	249	214	171	119	2518	48,2	

Comprimento e peso (B) referem-se à o Hidráulico.

Lenght and weight (B) refer to hydraulic part.

# BF 70 S - 60 Hz

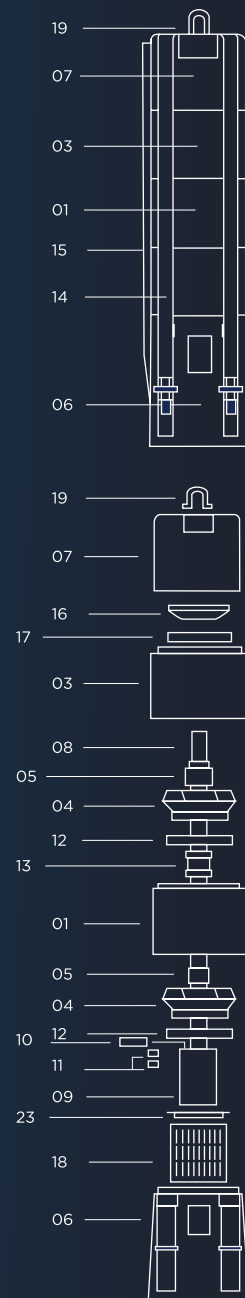
BF Pumps



# BF 70 S - 60 Hz

BF Pumps

pos.	Todos os componentes são feitos de aço inoxidável all components are made of stainless steel		Material
	Descrição   Description		
01	difusor   diffuser		AISI 304 [EN 1.4301] / 316[EN 1.4401]
03	difusor superior   top diffuser		AISI 304 [EN 1.4301] / 316[EN 1.4401]
04	turbina   impeller		AISI 304 [EN 1.4301] / 316[EN 1.4401]
05	casquilho cónico com porca   conical bush with nut		AISI 304 [EN 1.4301] / 316[EN 1.4401]
06	acoplamento do motor 6" motor coupling flange - suction corp for 6" motor		AISI 304 [EN 1.4301] / 316[EN 1.4401]
06	acoplamento do motor Start / Delta motor coupling flange - suction corp for Start / Delta		AISI 304 [EN 1.4301] / 316[EN 1.4401]
07	saída com aranha discharge casing with spider		AISI 304 [EN 1.4301] / 316[EN 1.4401]
07	saída com aranha discharge casing with spider		AISI 304 [EN 1.4301] / 316[EN 1.4401]
08	veio   shaft		AISI 304 [EN 1.4301] / 316[EN 1.4401]
09	cardan (ligações do veio do hidráulico ao veio do motor) coupling (shaft pump end / shaft motor)		AISI 304 [EN 1.4301] / 316[EN 1.4401]
10	braçadeira de acoplamento   coupling clamp		AISI 304 [EN 1.4301] / 316[EN 1.4401]
11	parafusos   screws		AISI 304 [EN 1.4301] / 316[EN 1.4401]
12	retentor da turbina   impeller fencer		NBR
13	hidroluva   shaft bearing		NBR
14	cintas de aperto   fitting belts		AISI 304 [EN 1.4301] / 316[EN 1.4401]
15	calha do cabo   cable guard		AISI 304 [EN 1.4301] / 316[EN 1.4401]
16	válvula   valve		AISI 304 [EN 1.4301] / 316[EN 1.4401]
17	retentor da válvula   valve fencer		AISI 304 [EN 1.4301] / 316[EN 1.4401]
18	rede de aspiração   suction strainer		AISI 304 [EN 1.4301] / 316[EN 1.4401]
23	rede de aspiração   suction strainer washer		AISI 304 [EN 1.4301] / 316[EN 1.4401]



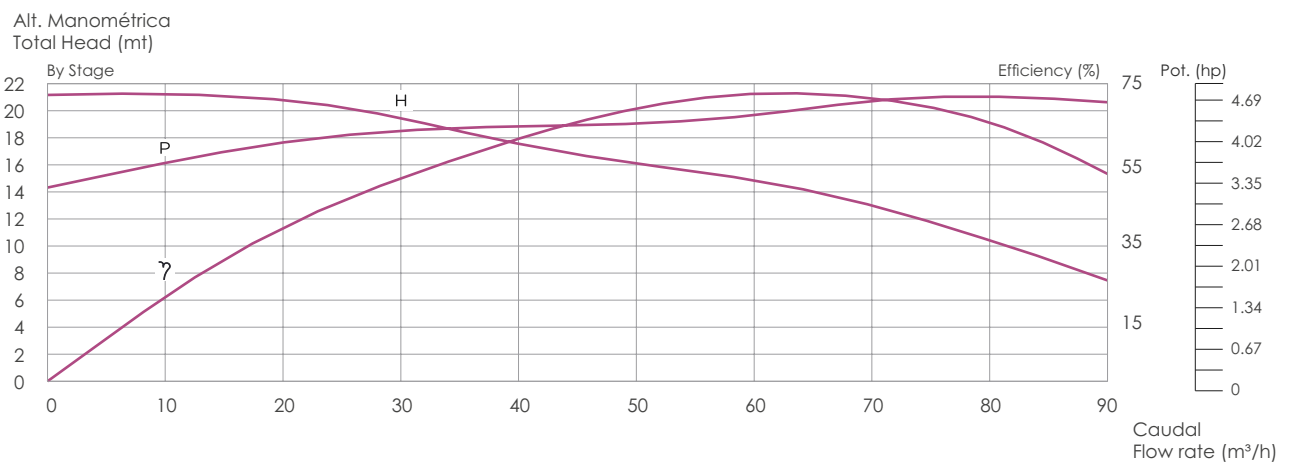
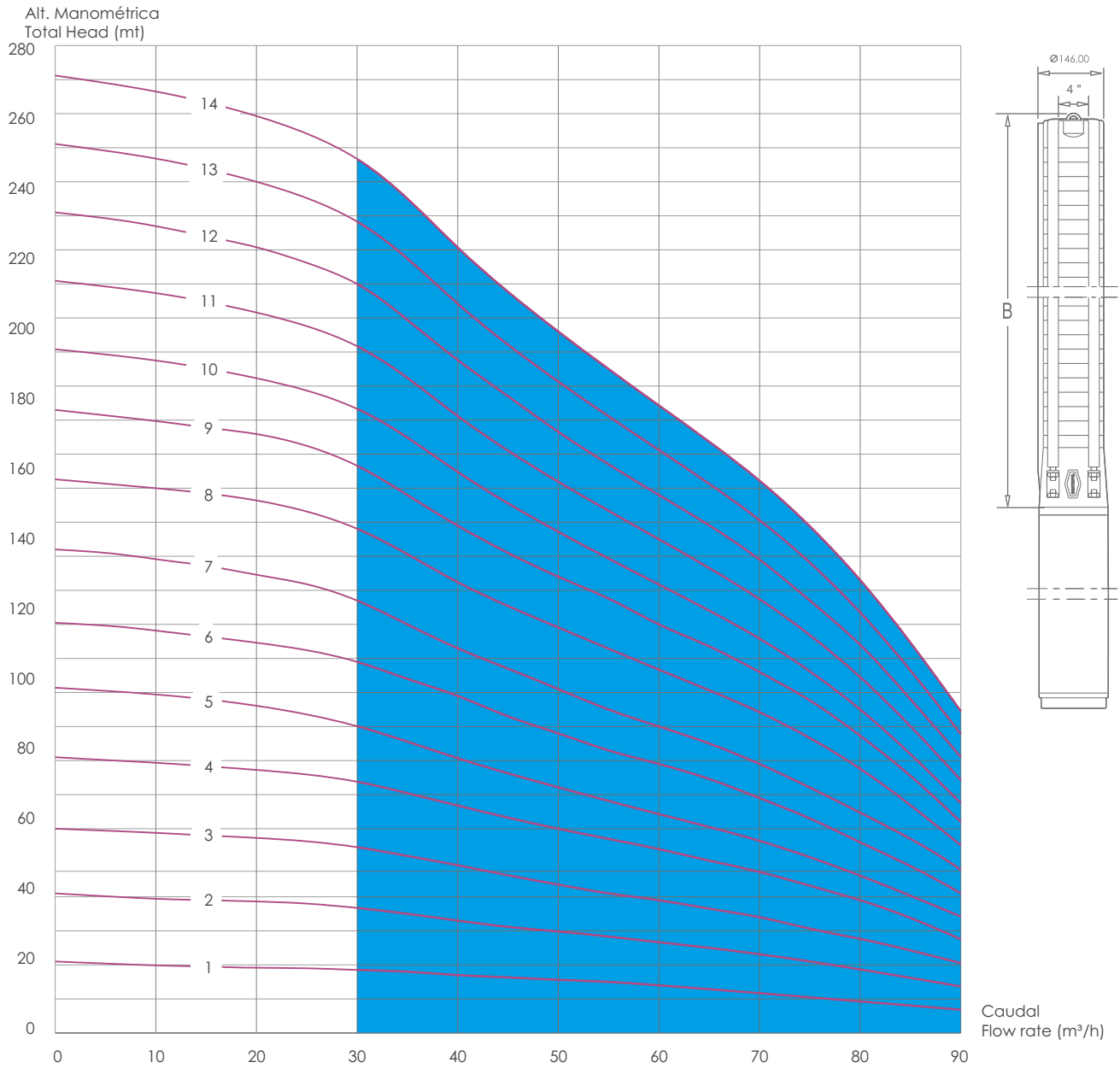
Saída / Outlet 3-4" Modelo / Model Tipo / Type	Motor		Altura Manométrica Total Head (m)	Caudal / Flow Rate																Comp. (B) Length (mm)	Peso (B) Weight (Kg)
				KW	HP	0	5.0	10.0	15.0	20.0	25.0	30.0	35.0	40.0	45.0	50.0	55.0	60.0	65.0		
	m³/h	0		5.0	10.0	15.0	20.0	25.0	30.0	35.0	40.0	45.0	50.0	55.0	60.0	65.0	70.0				
BF 70 S 2	5,5	7,5	38	37	35	34	33	32	31	30	28	25	23	20	16	13	10	488	9,8		
BF 70 S 3	7,5	10	55	53	52	51	50	48	46	44	41	38	34	30	25	20	13	598	12,1		
BF 70 S 4	9,3	12,5	74	72	70	68	66	65	62	59	55	51	46	41	35	28	19	708	14,4		
BF 70 S 5	11	15	92	87	85	83	83	80	77	73	69	64	58	50	43	35	26	818	16,7		
BF 70 S 6	15	20	110	107	104	102	99	96	92	88	83	77	69	61	53	42	32	928	19,1		
BF 70 S 8	18,5	25	145	142	138	135	131	127	121	116	109	101	92	82	69	56	42	1148	23,8		
BF 70 S 10	22	30	180	175	170	166	161	155	149	142	133	122	111	97	82	67	47	1368	28,5		
BF 70 S 13	30	40	239	234	227	221	215	209	201	192	180	166	152	136	116	94	70	1698	35,4		
BF 70 S 16	37	50	289	284	277	270	263	255	245	234	222	208	189	169	146	120	91	2028	42,4		
BF 70 S 18	45	60	327	321	313	305	298	289	278	265	251	235	214	191	165	135	103	2248	47,1		
BF 70 S 20	45	60	361	355	346	337	329	319	307	293	277	259	236	211	182	150	114	2468	51,8		

Comprimento e peso (B) referem-se à o Hidráulico.

Length and weight (B) refer to hydraulic part.

# BF 90 S - 60 Hz

BF Pumps

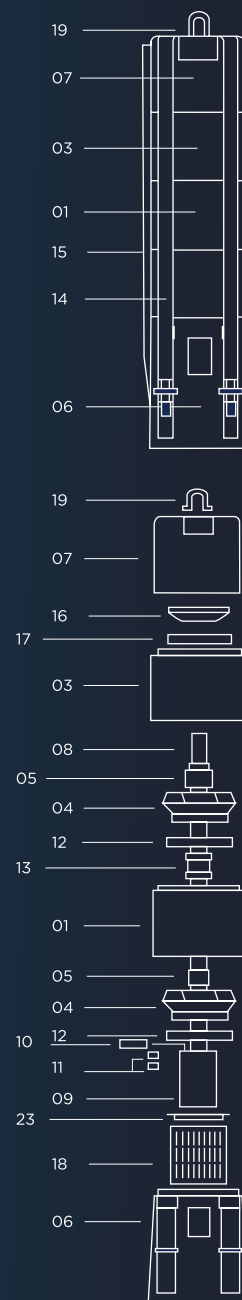




# BF 90 S - 60 Hz

BF Pumps

pos.	Todos os componentes são feitos de aço inoxidável all components are made of stainless steel		Material
	Descrição   Description		
01	difusor   diffuser		AISI 304 [EN 1.4301] / 316[EN 1.4401]
03	difusor superior   top diffuser		AISI 304 [EN 1.4301] / 316[EN 1.4401]
04	turbina   impeller		AISI 304 [EN 1.4301] / 316[EN 1.4401]
05	casquilho cónico com porca   conical bush with nut		AISI 304 [EN 1.4301] / 316[EN 1.4401]
06	acoplamento do motor 6" motor coupling flange - suction corp for 6" motor		AISI 304 [EN 1.4301] / 316[EN 1.4401]
06	acoplamento do motor Start / Delta motor coupling flange - suction corp for Start / Delta		AISI 304 [EN 1.4301] / 316[EN 1.4401]
07	saída com aranha discharge casing with spider		AISI 304 [EN 1.4301] / 316[EN 1.4401]
07	saída com aranha discharge casing with spider		AISI 304 [EN 1.4301] / 316[EN 1.4401]
08	veio   shaft		AISI 304 [EN 1.4301] / 316[EN 1.4401]
09	cardan (ligações do veio do hidráulico ao veio do motor) coupling (shaft pump end / shaft motor)		AISI 304 [EN 1.4301] / 316[EN 1.4401]
10	braçadeira de acoplamento   coupling clamp		AISI 304 [EN 1.4301] / 316[EN 1.4401]
11	parafusos   screws		AISI 304 [EN 1.4301] / 316[EN 1.4401]
12	retentor da turbina   impeller fencer		NBR
13	hidroluva   shaft bearing		NBR
14	cintas de aperto   fitting belts		AISI 304 [EN 1.4301] / 316[EN 1.4401]
15	calha do cabo   cable guard		AISI 304 [EN 1.4301] / 316[EN 1.4401]
16	válvula   valve		AISI 304 [EN 1.4301] / 316[EN 1.4401]
17	retentor da válvula   valve fencer		AISI 304 [EN 1.4301] / 316[EN 1.4401]
18	rede de aspiração   suction strainer		AISI 304 [EN 1.4301] / 316[EN 1.4401]
23	rede de aspiração   suction strainer washer		AISI 304 [EN 1.4301] / 316[EN 1.4401]



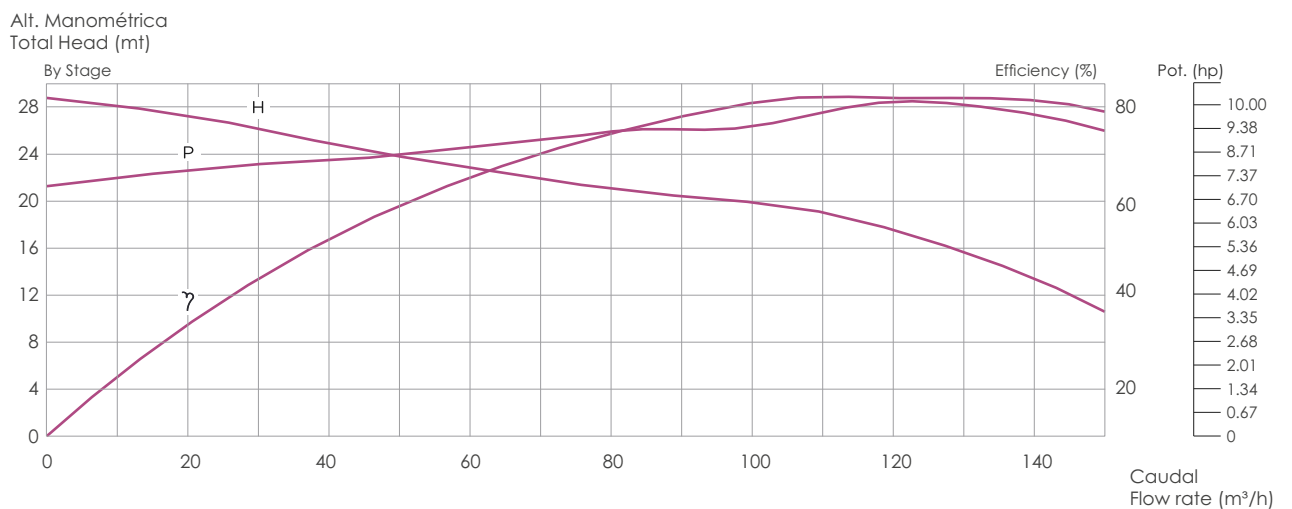
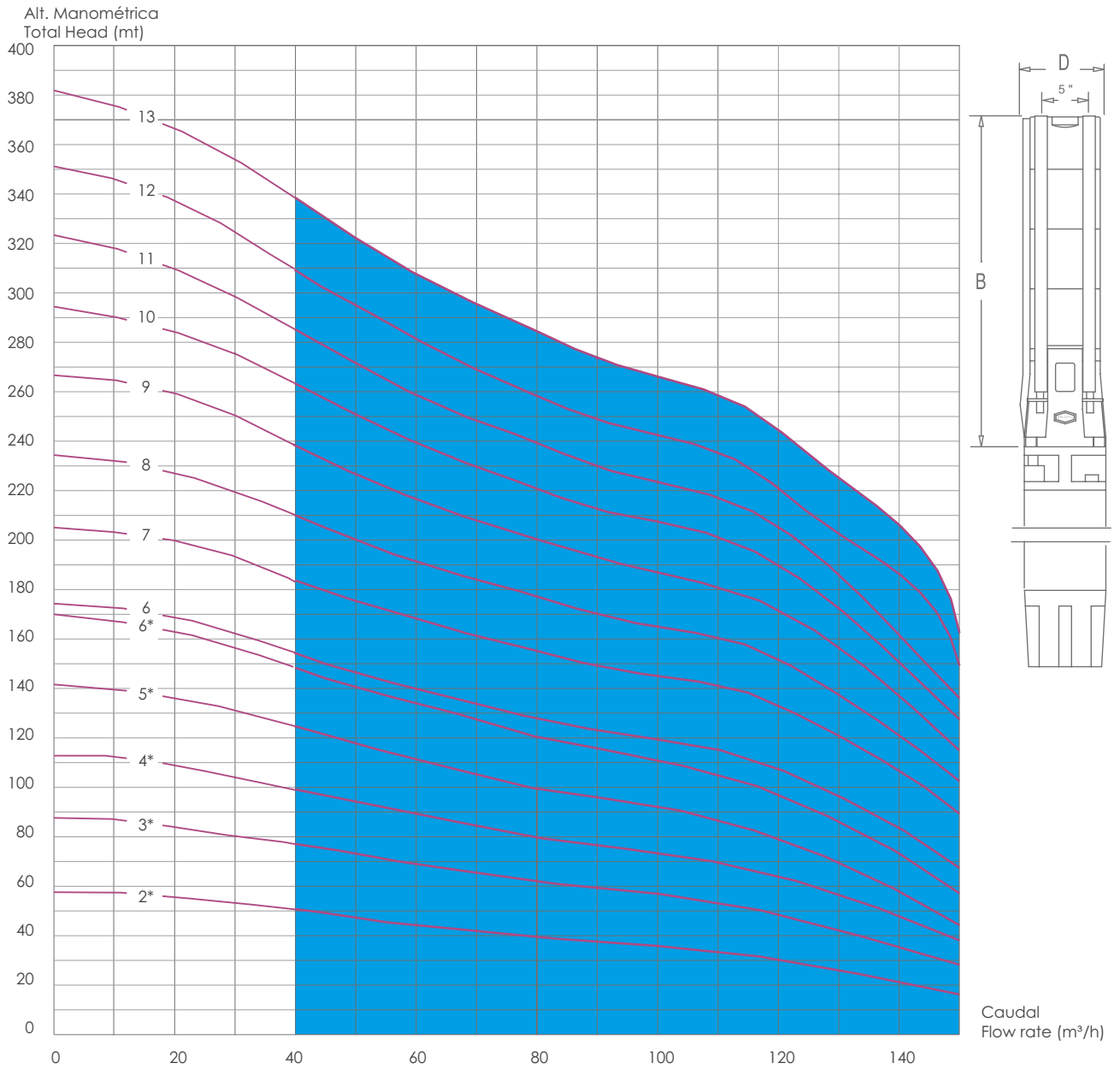
Saída / Outlet 4" Modelo / Model Tipo / Type	Motor		Altura Manométrica Total Head (m)	Caudal / Flow Rate											Comp. (B) Length (mm)	Peso (B) Weight (Kg)
	KW	HP		0	10.0	20.0	30.0	40.0	50.0	60.0	70.0	80.0	90.0			
BF 90 S 1	5,5	7,5	Altura Manométrica Total Head (m)	21	20	19	19	17	16	14	12	9	7	401	4,9	
BF 90 S 2	7,5	10		41	39	39	37	33	30	27	23	19	14	526	10,1	
BF 90 S 3	9,3	12,5		60	59	57	55	49	44	39	34	28	21	651	12,7	
BF 90 S 4	15	20		81	79	77	74	67	60	54	47	39	28	776	15,4	
BF 90 S 5	18,5	25		101	99	96	90	81	72	64	56	46	34	901	18,0	
BF 90 S 6	18,5	25		120	118	115	109	99	88	79	69	56	41	1026	20,6	
BF 90 S 7	22	30		142	139	135	127	113	101	90	79	65	48	1151	23,2	
BF 90 S 8	30	40		163	160	156	148	132	119	107	94	78	55	1276	25,8	
BF 90 S 9	30	40		183	180	176	167	149	134	120	106	87	62	1345	28,4	
BF 90 S 10	37	50		201	198	192	183	165	147	132	116	95	68	1401	31,1	
BF 90 S 11	37	50		221	217	212	202	181	162	145	127	105	74	1526	33,7	
BF 90 S 12	37	50		241	237	231	220	198	177	158	139	114	81	1651	36,3	
BF 90 S 13	45	60		261	257	250	238	214	191	171	150	124	88	1776	38,9	
BF 90 S 14	45	60		281	277	269	257	231	206	184	162	133	95	1901	41,5	

Comprimento e peso (B) referem-se à o Hidráulico.

Length and weight (B) refer to hydraulic part.

# BF 150 S - 60 Hz

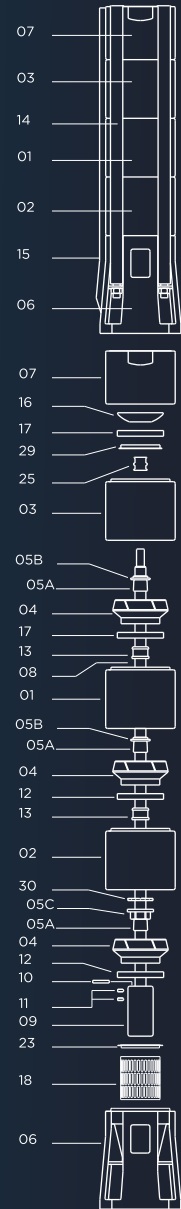
BF Pumps



# BF 150 S - 60 Hz

BF Pumps

pos.	Todos os componentes são feitos de aço inoxidável all components are made of stainless steel		Material
	Descrição	Description	
01	difusor	diffuser	AISI 304 / 316
02	difusor baixo	lower diffuser	AISI 304 / 316
03	difusor superior	top diffuser	AISI 304 / 316
04	turbina	impeller	AISI 304 / 316
05A	casquilho cónico	conical bush	AISI 304 / 316
05B	porca de turbina	impeller nut	AISI 304 / 316
05C	porca de 1ª turbina	1st impeller nut	AISI 304 / 316
06	acoplamento do motor 8"	motor coupling flange - suction corp for 8" motor	AISI 304 / 316
06	acoplamento do motor 6"	motor coupling flange - suction corp for 6" motor	AISI 304 / 316
06	acoplamento do motor Start / Delta 8"	motor coupling flange - suction corp for Start / Delta 8"	AISI 304 / 316
06	acoplamento do motor Start / Delta 6"	motor coupling flange - suction corp for Start / Delta 6"	AISI 304 / 316
07	saída com aranha, saída 5"	discharge casing with spider outlet 5"	AISI 304 / 316
08	veio	shaft	AISI 304 / 316
09	cardan 8" (ligações do veio do hidráulico ao veio do motor)	coupling 8" (shaft pump end / shaft motor)	AISI 304 / 316
09	cardan 6" (ligações do veio do hidráulico ao veio do motor)	coupling 6" (shaft pump end / shaft motor)	AISI 304 / 316
10	braçadeira de acoplamento 8"	coupling clamp 8"	AISI 304 / 316
10	braçadeira de acoplamento 6"	coupling clamp 6"	AISI 304 / 316
11	parafuso de acoplamento 8"	coupling screws 8"	AISI 304 / 316
11	parafuso de acoplamento 6"	coupling screws 6"	AISI 304 / 316
12	retentor da turbina	impeller fencer	NBR
13	hidroluva	shaft bearing	NBR
14	cintas de aperto	fitting belts	AISI 304 / 316
15	calha do cabo	cable guard	AISI 304 / 316
16	válvula	valve	AISI 304 / 316
17	retentor da válvula	valve fencer	AISI 304 / 316
18	rede de aspiração	suction strainer	AISI 304 / 316
23	rede de aspiração	suction strainer washer	AISI 304 / 316
25	hidroluva para difusor superior	shaft bearing for top diffuser	AISI 304 / 316
29	retentor da válvula	valve fencer washer	AISI 304 / 316
30	casquilho para evitar choque	bush to avoid shock starter	AISI 304 / 316



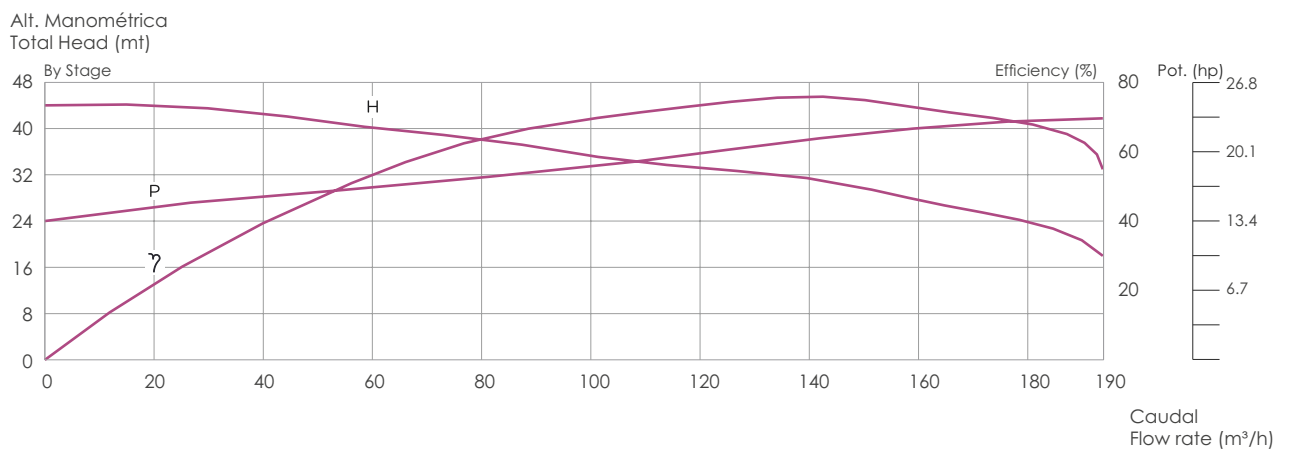
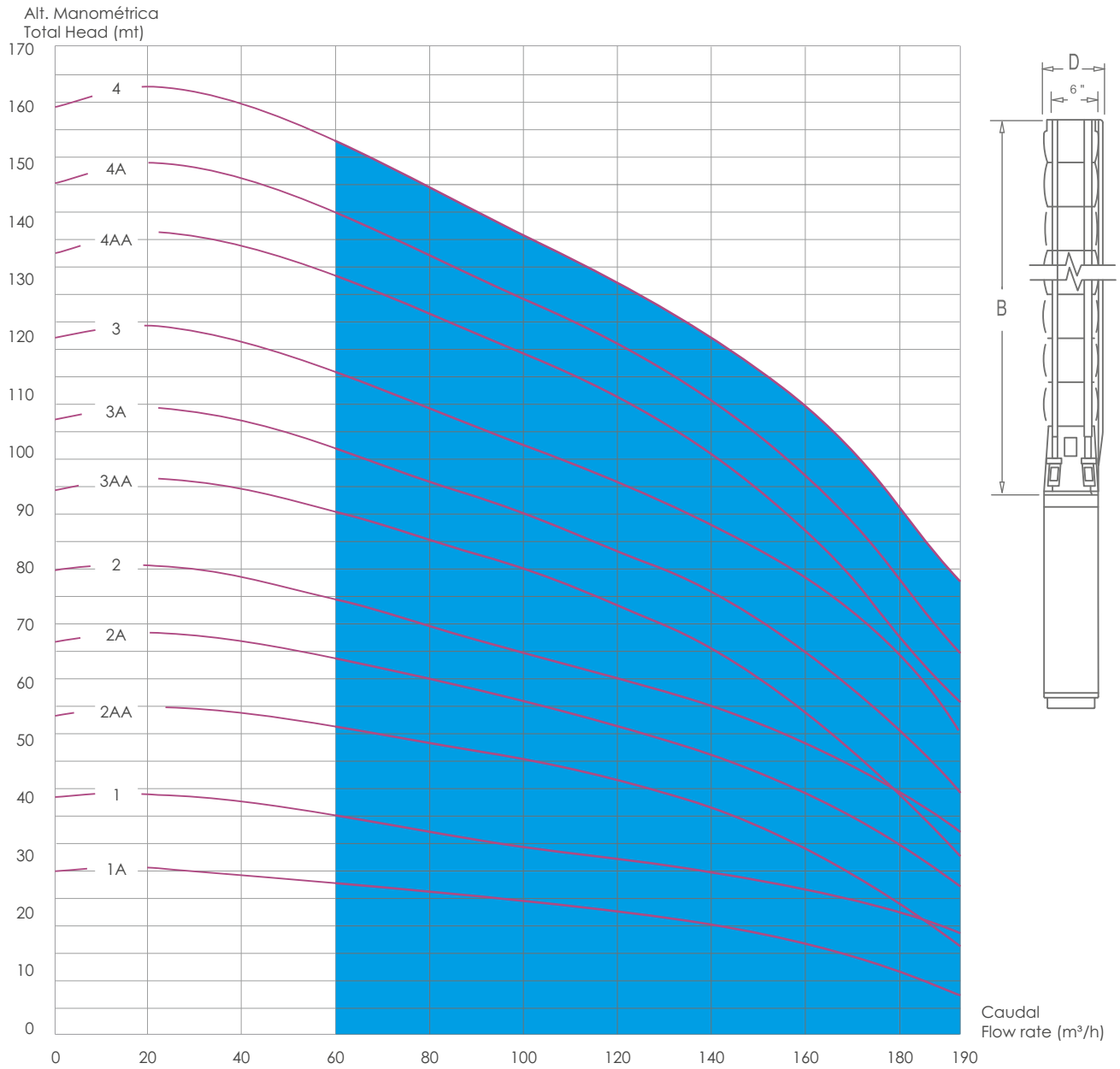
Saída / Outlet 5" Modelo / Model Tipo / Type	Motor 6"		Altura Manométrica Total Head (m)	Caudal / Flow Rate													Comp. (B) Length (mm)	Peso (B) Weight (Kg)
	KW	HP		0	18.0	30.0	42.0	54.0	66.0	78.0	90.0	102.0	114.0	126.0	138.0	150.0		
	m³/h																	
BF 150 S 2*	15	20		58	56	53	50	46	43	40	39	35	32	28	22	16	584	16,7
BF 150 S 3*	22	30		88	85	80	86	71	67	62	59	56	52	45	37	28	719	20,2
BF 150 S 4*	30	40		113	110	104	98	92	86	81	76	73	67	60	50	38	854	23,7
BF 150 S 5*	37	50		142	137	131	122	115	108	100	96	91	84	74	60	44	989	27,2
BF 150 S 6*	45	60		170	164	157	146	138	130	122	116	110	103	91	76	57	1124	30,7
BF 150 S 6	45	60		174	170	163	152	144	136	129	123	119	113	101	86	67	1159	32,7
BF 150 S 7	52	70		205	201	193	182	173	164	157	149	145	139	126	110	89	1294	36,2
BF 150 S 8	60	80		234	229	220	208	196	188	179	170	164	158	144	125	103	1429	39,7
BF 150 S 9	67	90		267	261	250	236	222	212	202	193	186	178	164	141	115	1564	43,2
BF 150 S 10	75	100		294	286	275	261	246	234	223	212	207	198	180	155	127	1699	46,7
BF 150 S 11	83	111		323	312	298	282	266	253	241	230	222	214	195	167	136	1834	50,2
BF 150 S 12	93	125		351	339	325	306	290	275	260	249	241	231	209	180	149	1969	53,7
BF 150 S 13	93	125		382	369	354	335	316	301	287	274	265	255	233	200	162	2104	57,2

Comprimento e peso (B) referem-se à o Hidráulico. Com motor 6" D= 174 mm. Com motor 8" D= 202mm

Length and weight (B) refer to hydraulic part. With 6" motor D= 174 mm. With motor 8" D= 202mm

# BF 190 S - 60 Hz

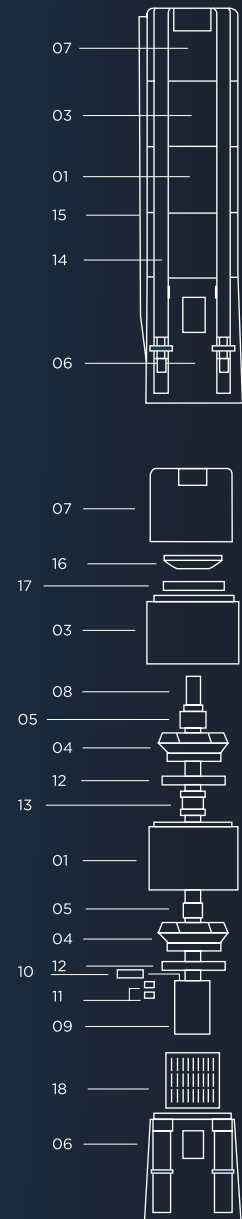
BF Pumps



# BF 190 S - 60 Hz

BF Pumps

pos.	Todos os componentes são feitos de aço inoxidável all components are made of stainless steel		Material
	Descrição   Description		
01	difusor   diffuser		AISI 304 [EN 1.4301] / 316[EN 1.4401]
03	difusor superior   top diffuser		AISI 304 [EN 1.4301] / 316[EN 1.4401]
04	turbina   impeller		AISI 304 [EN 1.4301] / 316[EN 1.4401]
05	casquilho cônico com porca   conical bush with nut		AISI 304 [EN 1.4301] / 316[EN 1.4401]
06	acoplamento do motor 8" A.D./E.T. 8" motor coupling flange - suction corp for motor DOL/S.D.		AISI 304 [EN 1.4301] / 316[EN 1.4401]
06	acoplamento do motor 6" A.D./E.T. 6" motor coupling flange - suction corp for motor DOL/S.D.		AISI 304 [EN 1.4301] / 316[EN 1.4401]
07	saída discharge casing		AISI 304 [EN 1.4301] / 316[EN 1.4401]
08	veio   shaft		AISI 304 [EN 1.4301] / 316[EN 1.4401]
09	cardan coupling (shaft pump end / shaft motor)		AISI 304 [EN 1.4301] / 316[EN 1.4401]
10	chaveta   coupling clamp		AISI 304 [EN 1.4301] / 316[EN 1.4401]
11	parafusos   screws		AISI 304 [EN 1.4301] / 316[EN 1.4401]
12	retentor da turbina   impeller fencer		NBR
13	hidroluva   shaft bearing		NBR
14	cintas de aperto   fitting belts		AISI 304 [EN 1.4301] / 316[EN 1.4401]
15	calha do cabo   cable guard		AISI 304 [EN 1.4301] / 316[EN 1.4401]
16	válvula   valve		AISI 304 [EN 1.4301] / 316[EN 1.4401]
17	retentor da válvula   valve fencer		AISI 304 [EN 1.4301] / 316[EN 1.4401]
18	rede de aspiração   suction strainer		AISI 304 [EN 1.4301] / 316[EN 1.4401]



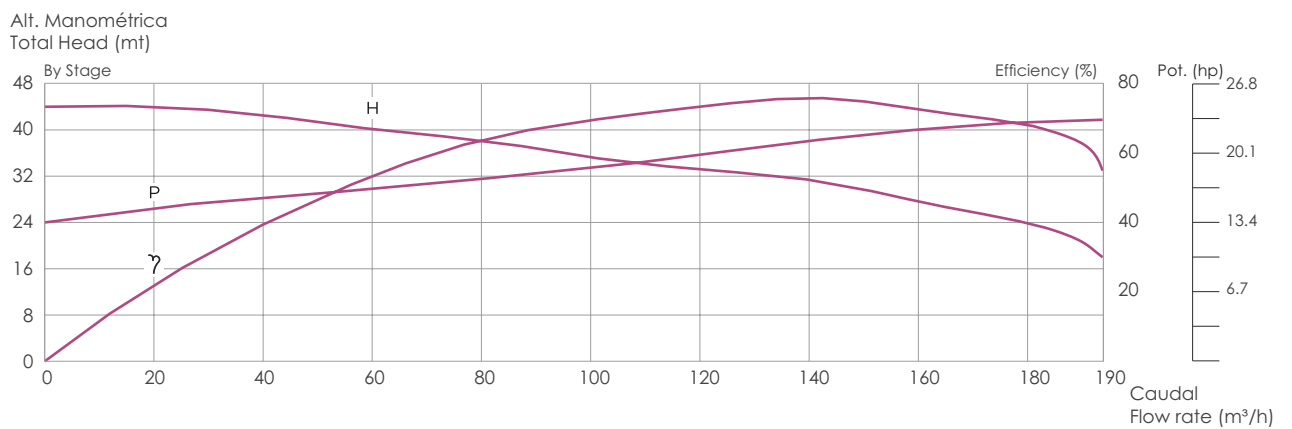
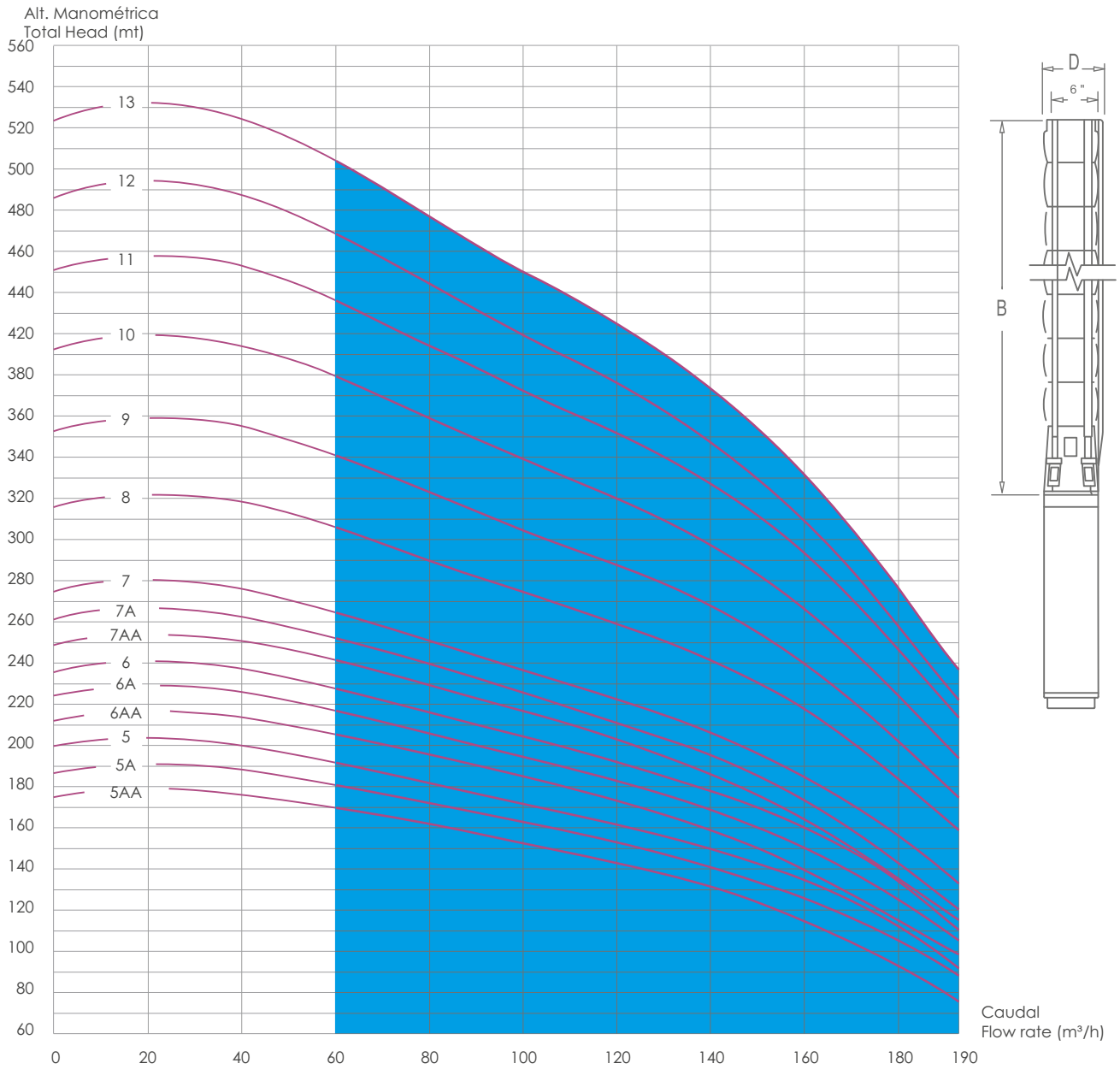
Saída / Outlet 6" Modelo / Model Tipo / Type	Motor 6"		Altura Manométrica Total Head (m)	Caudal / Flow Rate													Comp. (B) Length (mm)	Peso (B) Weight (Kg)
	KW	HP		0	60.0	80.0	90.0	100.0	110.0	120.0	130.0	140.0	150.0	170.0	190.0			
	BF 190 S 1A	11		15	30	28	26	25	24	23	22	21	20	19	15	9		
BF 190 S 1	18,5	25	44	40	38	36	35	34	33	32	31	29	25	18	641	27,0		
BF 190 S 2AA	22	30	60	56	53	52	50	48	46	44	41	38	29	19	797	33,0		
BF 190 S 2A	26	35	72	75	64	62	60	58	56	54	51	48	40	28	797	33,0		
BF 190 S 2	30	40	86	80	75	73	71	68	66	64	61	58	51	38	797	33,0		
BF 190 S 3AA	37	50	102	96	91	88	85	83	79	76	71	66	54	40	953	39,0		
BF 190 S 3A	37	50	114	108	101	98	95	92	89	85	81	77	64	48	953	39,0		
BF 190 S 3	45	60	130	122	115	112	108	105	101	98	94	90	79	62	953	39,0		
BF 190 S 4AA	55	75	146	138	131	128	124	120	116	111	106	99	83	64	1109	45,0		
BF 190 S 4A	55	75	158	150	142	138	136	130	126	121	116	110	94	74	1109	45,0		
BF 190 S 4	63	80	172	162	154	150	145	141	136	132	126	121	106	86	1109	45,0		

Comprimento e peso (B) referem-se à o Hidráulico. Com motor 6" D= 212 mm. Com motor 8" D= 217mm

Length and weight (B) refer to hydraulic part. With 6" motor D= 212 mm. With motor 8" D= 217mm

# BF 190 S - 60 Hz

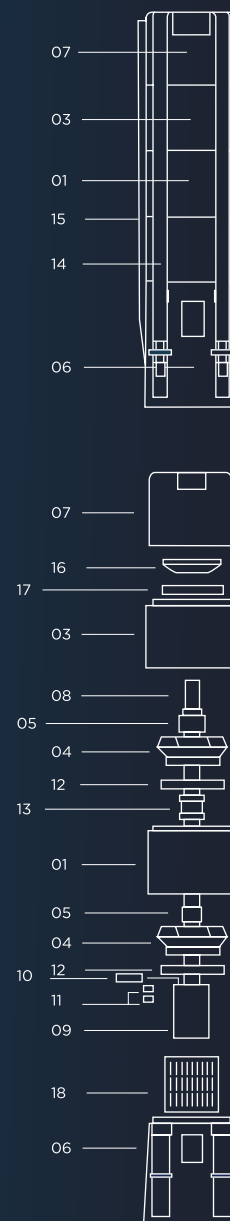
BF Pumps



# BF 190 S - 60 Hz

BF Pumps

pos.	Todos os componentes são feitos de aço inoxidável all components are made of stainless steel		Material
	Descrição	Description	
01		difusor   diffuser	AISI 304 [EN 1.4301] / 316[EN 1.4401]
03		difusor superior   top diffuser	AISI 304 [EN 1.4301] / 316[EN 1.4401]
04		turbina   impeller	AISI 304 [EN 1.4301] / 316[EN 1.4401]
05		casquilho cónico com porca   conical bush with nut	AISI 304 [EN 1.4301] / 316[EN 1.4401]
06		acoplamento do motor 8" A.D./E.T. 8" motor coupling flange - suction corp for motor DOL/S.D.	AISI 304 [EN 1.4301] / 316[EN 1.4401]
06		acoplamento do motor 6" A.D./E.T. 6" motor coupling flange - suction corp for motor DOL/S.D.	AISI 304 [EN 1.4301] / 316[EN 1.4401]
07		saída discharge casing	AISI 304 [EN 1.4301] / 316[EN 1.4401]
08		veio   shaft	AISI 304 [EN 1.4301] / 316[EN 1.4401]
09		cardan coupling (shaft pump end / shaft motor)	AISI 304 [EN 1.4301] / 316[EN 1.4401]
10		chaveta   coupling clamp	AISI 304 [EN 1.4301] / 316[EN 1.4401]
11		parafusos   screws	AISI 304 [EN 1.4301] / 316[EN 1.4401]
12		retentor da turbina   impeller fencer	NBR
13		hidroluva   shaft bearing	NBR
14		cintas de aperto   fitting belts	AISI 304 [EN 1.4301] / 316[EN 1.4401]
15		calha do cabo   cable guard	AISI 304 [EN 1.4301] / 316[EN 1.4401]
16		válvula   valve	AISI 304 [EN 1.4301] / 316[EN 1.4401]
17		retentor da válvula   valve fencer	AISI 304 [EN 1.4301] / 316[EN 1.4401]
18		rede de aspiração   suction strainer	AISI 304 [EN 1.4301] / 316[EN 1.4401]



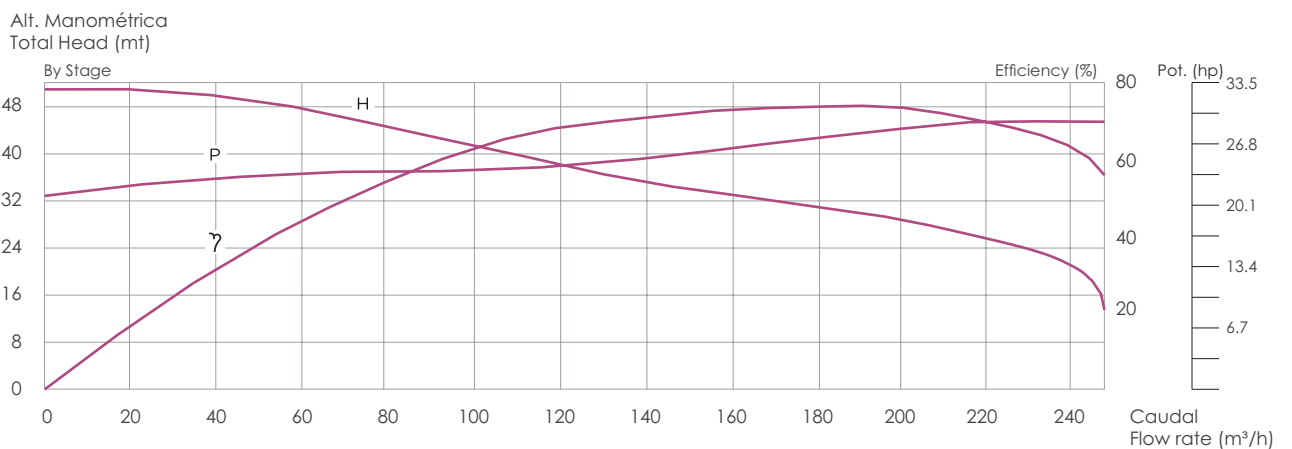
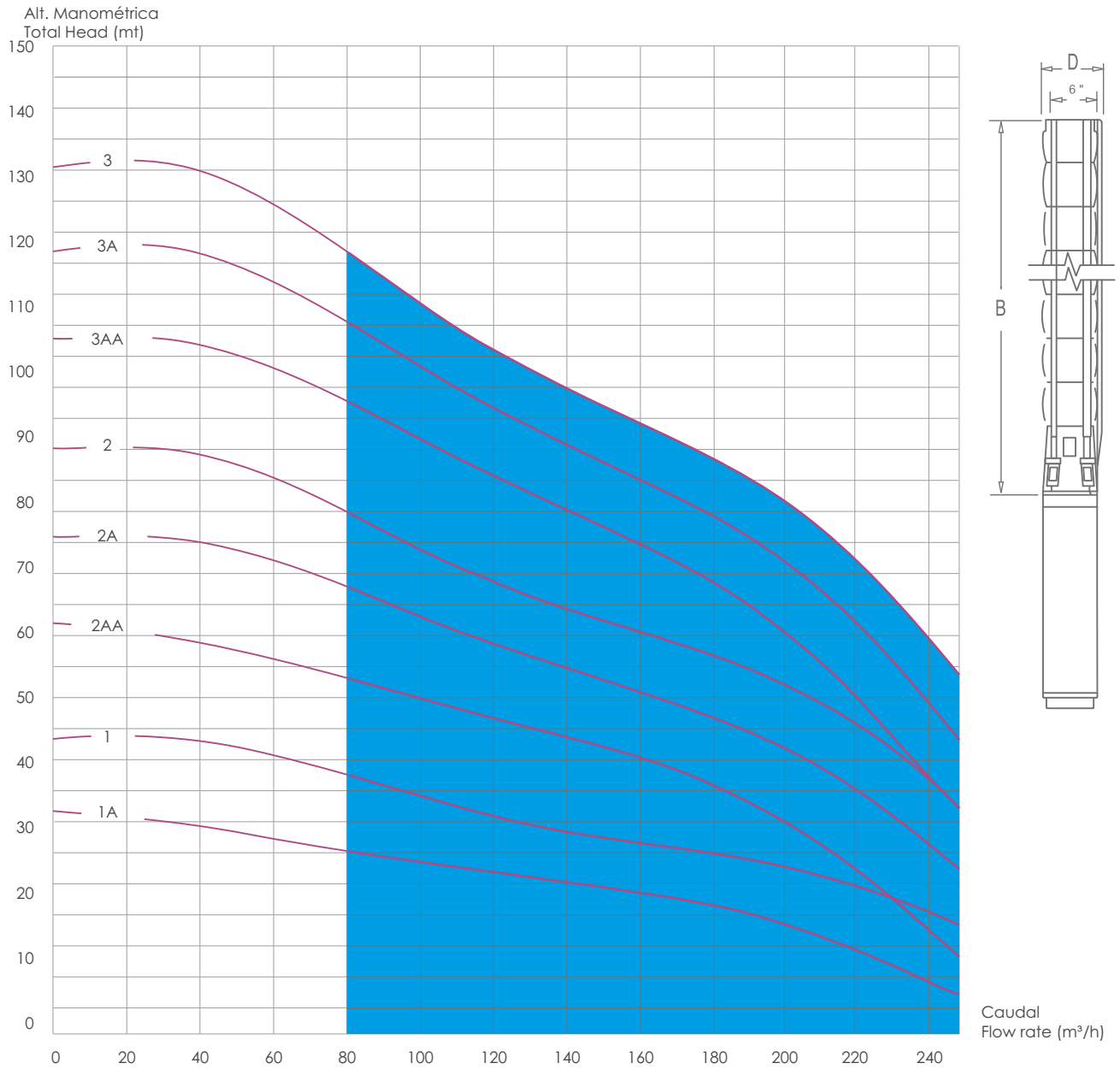
Saída / Outlet 6" Modelo/ Model Tipo / Type	Motor 8"		Altura Manométrica Total Head (m)	Caudal / Flow Rate													Comp. (B) Length (mm)	Peso (B) Weight (Kg)
	KW	HP		0	60.0	80.0	90.0	100.0	110.0	120.0	130.0	140.0	150.0	170.0	190.0			
BF 190 S 5AA	75	100	Altura Manométrica Total Head (m)	190	175	169	164	160	155	150	143	137	130	111	84	1265	51,0	
BF 190 S 5A	75	100		200	188	181	175	170	165	160	154	147	140	121	96	1265	51,0	
BF 190 S 5	75	100		215	200	192	187	181	175	170	164	157	150	132	108	1265	51,0	
BF 190 S 6AA	75	100		230	215	206	201	195	189	182	175	167	157	135	104	1421	57,0	
BF 190 S 6A	93	125		245	228	218	211	205	198	192	185	177	167	145	115	1421	57,0	
BF 190 S 6	93	125		255	237	229	223	215	208	202	195	188	179	155	127	1421	57,0	
BF 190 S 7AA	93	125		270	257	243	237	230	222	214	206	196	185	157	122	1577	63,0	
BF 190 S 7A	93	125		285	265	255	247	239	232	225	215	206	195	167	133	1577	63,0	
BF 190 S 7	110	150		297	277	268	259	253	245	237	230	220	209	183	148	1577	63,0	
BF 190 S 8	130	175		343	323	309	300	293	285	276	267	257	245	212	175	1733	70,0	
BF 190 S 9	130	175		385	361	346	336	327	317	307	298	288	275	239	195	1889	76,0	
BF 190 S 10	150	200		430	403	386	376	365	355	345	334	322	306	270	220	2045	82,0	
<b>Motor 10"</b>																		
BF 190 S 11	185	250			472	442	426	413	402	390	380	368	350	338	295	244	2201	91,0
BF 190 S 12	185	250		508	475	455	442	429	416	403	389	374	355	309	250	2357	97,0	
BF 190 S 13	185	250		550	512	490	476	461	447	434	418	401	380	329	266	2513	104,0	

Comprimento e peso (B) referem-se à o Hidráulico. Com motor 8" D= 217 mm. Com motor 10" D= 235mm

Length and weight (B) refer to hydraulic part. With 8" motor D= 217 mm. With motor 10" D= 235mm

# BF 250 S - 60 Hz

BF Pumps

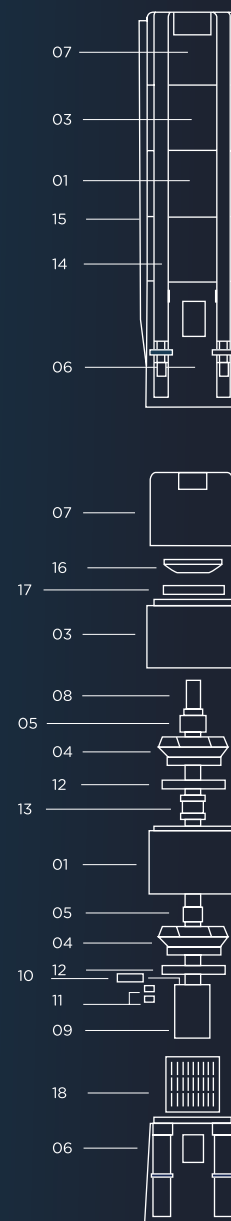




# BF 250 S - 60 Hz

BF Pumps

pos.	Todos os componentes são feitos de aço inoxidável all components are made of stainless steel		Material
	Descrição	Description	
01	difusor	diffuser	AISI 304 [EN 1.4301] / 316[EN 1.4401]
03	difusor superior	top diffuser	AISI 304 [EN 1.4301] / 316[EN 1.4401]
04	turbina	impeller	AISI 304 [EN 1.4301] / 316[EN 1.4401]
05	casquilho cónico com porca	conical bush with nut	AISI 304 [EN 1.4301] / 316[EN 1.4401]
06	acoplamento do motor 8" A.D./E.T.	8" motor coupling flange - suction corp for motor DOL/S.D.	AISI 304 [EN 1.4301] / 316[EN 1.4401]
06	acoplamento do motor 6" A.D./E.T.	6" motor coupling flange - suction corp for motor DOL/S.D.	AISI 304 [EN 1.4301] / 316[EN 1.4401]
07	saída	discharge casing	AISI 304 [EN 1.4301] / 316[EN 1.4401]
08	veio	shaft	AISI 304 [EN 1.4301] / 316[EN 1.4401]
09	cardan	coupling (shaft pump end / shaft motor)	AISI 304 [EN 1.4301] / 316[EN 1.4401]
10	chaveta	coupling clamp	AISI 304 [EN 1.4301] / 316[EN 1.4401]
11	parafusos	screws	AISI 304 [EN 1.4301] / 316[EN 1.4401]
12	retentor da turbina	impeller fencer	NBR
13	hidroluva	shaft bearing	NBR
14	cintas de aperto	fitting belts	AISI 304 [EN 1.4301] / 316[EN 1.4401]
15	calha do cabo	cable guard	AISI 304 [EN 1.4301] / 316[EN 1.4401]
16	válvula	valve	AISI 304 [EN 1.4301] / 316[EN 1.4401]
17	retentor da válvula	valve fencer	AISI 304 [EN 1.4301] / 316[EN 1.4401]
18	rede de aspiração	suction strainer	AISI 304 [EN 1.4301] / 316[EN 1.4401]



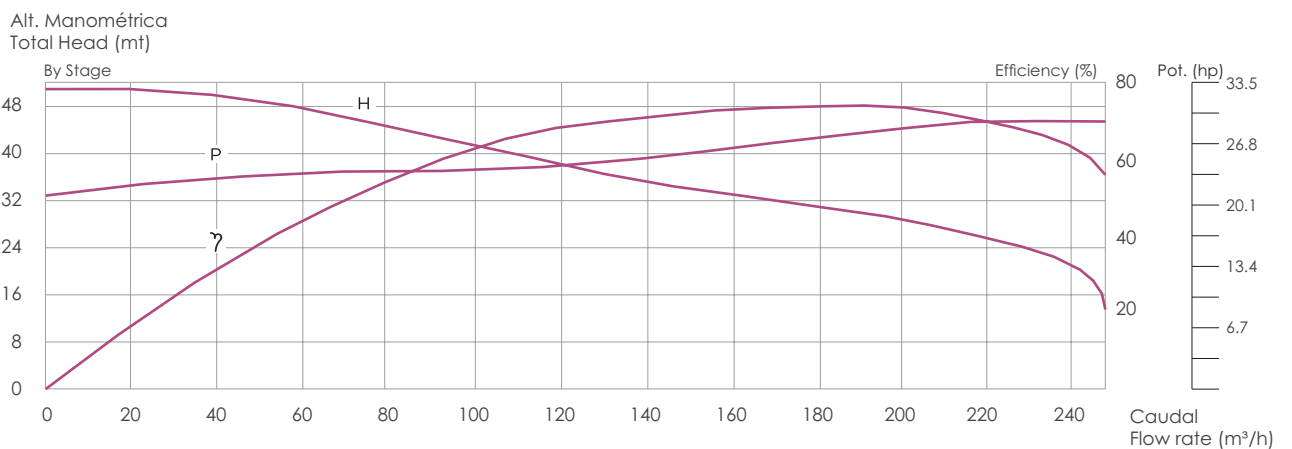
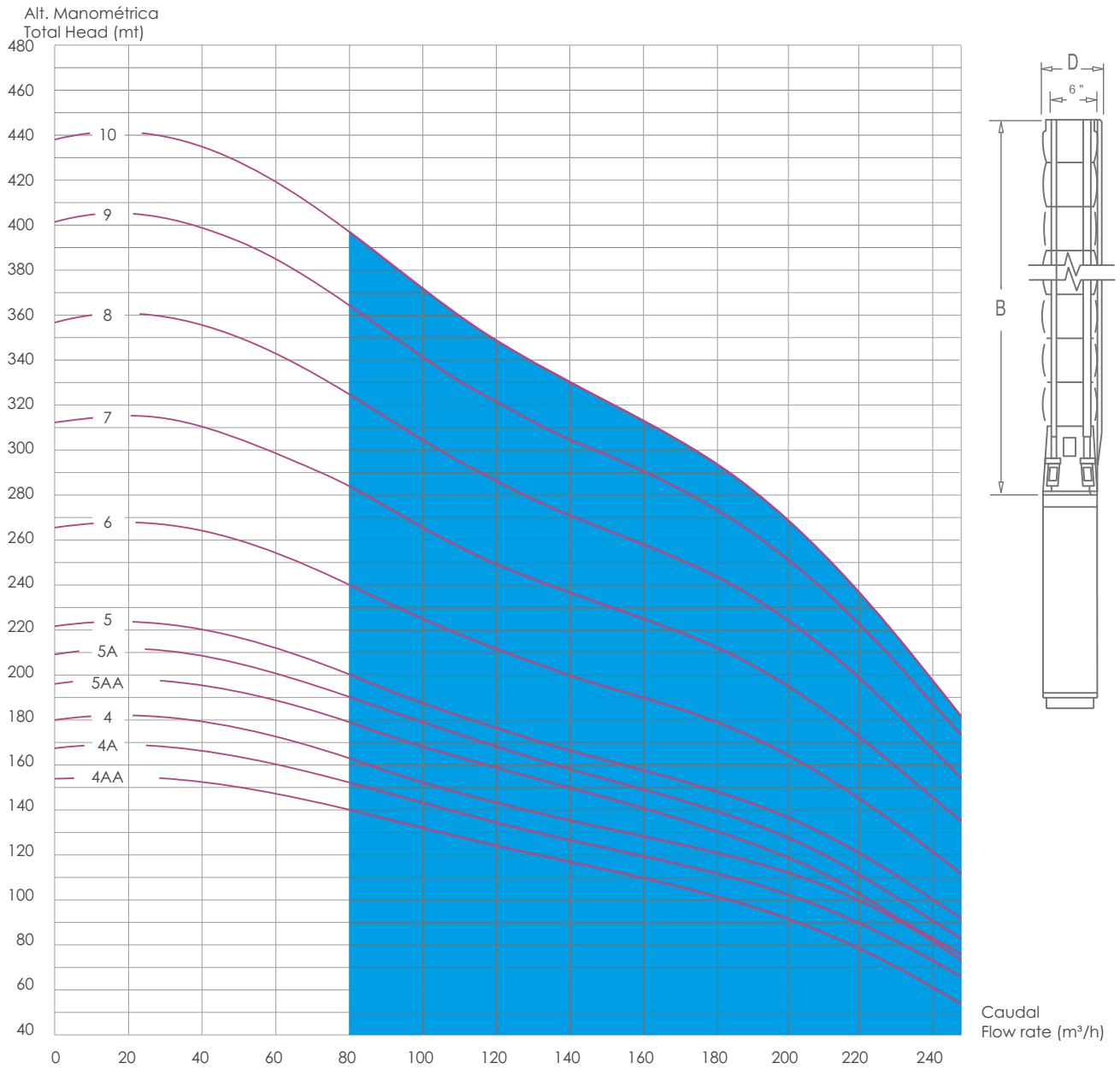
Saída / Outlet 6" Modelo / Model Tipo / Type	Motor 6"		Altura Manométrica Total Head (m)	Caudal / Flow Rate												Comp. (B) Length (mm)	Peso (B) Weight (Kg)
	KW	HP		0	100.0	120.0	130.0	140.0	150.0	160.0	170.0	190.0	210.0	230.0	250.0		
BF 250 S 1A	15	20	Altura Manométrica Total Head (m)	35	27	25	24	23	22	21	20	19	16	11	6	641	26,0
BF 250 S 1	22	30		49	40	37	35	34	33	32	31	29	27	23	13	641	26,0
BF 250 S 2AA	26	35		67	55	53	51	49	48	46	44	39	32	23	17	797	33,0
BF 250 S 2A	37	50		81	68	64	62	59	57	56	54	50	44	36	27	797	33,0
BF 250 S 2	37	50		94	78	73	72	68	66	65	63	59	53	46	36	797	33,0
BF 250 S 3AA	45	60		113	97	91	88	86	83	80	77	70	62	49	37	953	39,0
BF 250 S 3A	55	75		128	109	102	99	96	93	90	88	81	73	61	48	953	39,0
BF 250 S 3	55	75		142	119	112	108	105	102	100	97	91	83	72	58	953	39,0

Comprimento e peso (B) referem-se à o Hidráulico. Com motor 8" D= 217 mm.

Length and weight (B) refer to hydraulic part. With 8" motor D= 217 mm.

# BF 250 S - 60 Hz

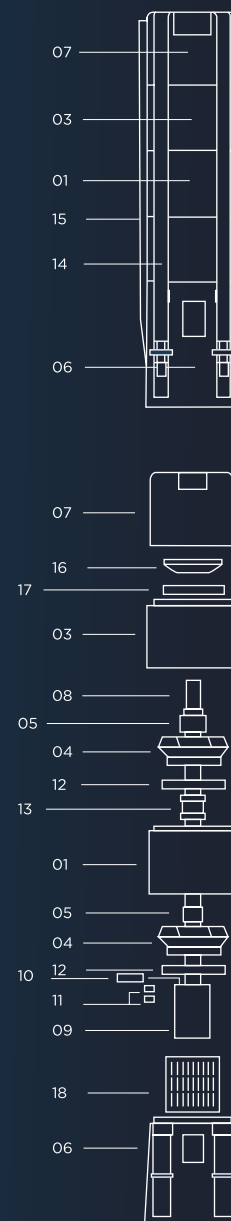
BF Pumps



# BF 250 S - 60 Hz

BF Pumps

pos.	Todos os componentes são feitos de aço inoxidável all components are made of stainless steel		Material
	Descrição   Description		
01	difusor   diffuser		AISI 304 [EN 1.4301] / 316[EN 1.4401]
03	difusor superior   top diffuser		AISI 304 [EN 1.4301] / 316[EN 1.4401]
04	turbina   impeller		AISI 304 [EN 1.4301] / 316[EN 1.4401]
05	casquilho cônico com porca   conical bush with nut		AISI 304 [EN 1.4301] / 316[EN 1.4401]
06	acoplamento do motor 8" A.D./E.T. 8" motor coupling flange - suction corp for motor DOL/S.D.		AISI 304 [EN 1.4301] / 316[EN 1.4401]
06	acoplamento do motor 6" A.D./E.T. 6" motor coupling flange - suction corp for motor DOL/S.D.		AISI 304 [EN 1.4301] / 316[EN 1.4401]
07	saída discharge casing		AISI 304 [EN 1.4301] / 316[EN 1.4401]
08	veio   shaft		AISI 304 [EN 1.4301] / 316[EN 1.4401]
09	cardan coupling (shaft pump end / shaft motor)		AISI 304 [EN 1.4301] / 316[EN 1.4401]
10	chaveta   coupling clamp		AISI 304 [EN 1.4301] / 316[EN 1.4401]
11	parafusos   screws		AISI 304 [EN 1.4301] / 316[EN 1.4401]
12	retentor da turbina   impeller fencer		NBR
13	hidroluva   shaft bearing		NBR
14	cintas de aperto   fitting belts		AISI 304 [EN 1.4301] / 316[EN 1.4401]
15	calha do cabo   cable guard		AISI 304 [EN 1.4301] / 316[EN 1.4401]
16	válvula   valve		AISI 304 [EN 1.4301] / 316[EN 1.4401]
17	retentor da válvula   valve fencer		AISI 304 [EN 1.4301] / 316[EN 1.4401]
18	rede de aspiração   suction strainer		AISI 304 [EN 1.4301] / 316[EN 1.4401]



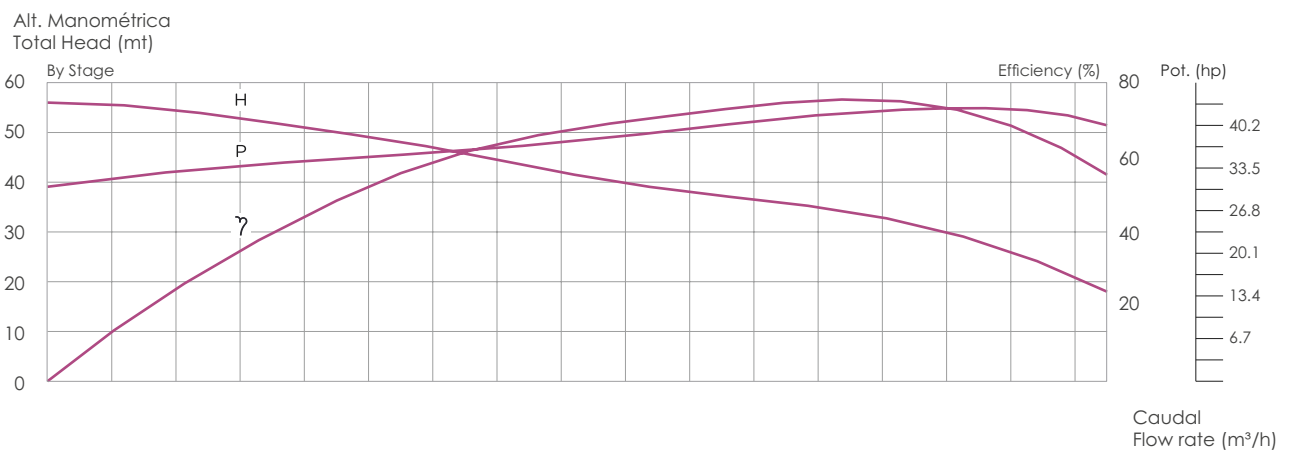
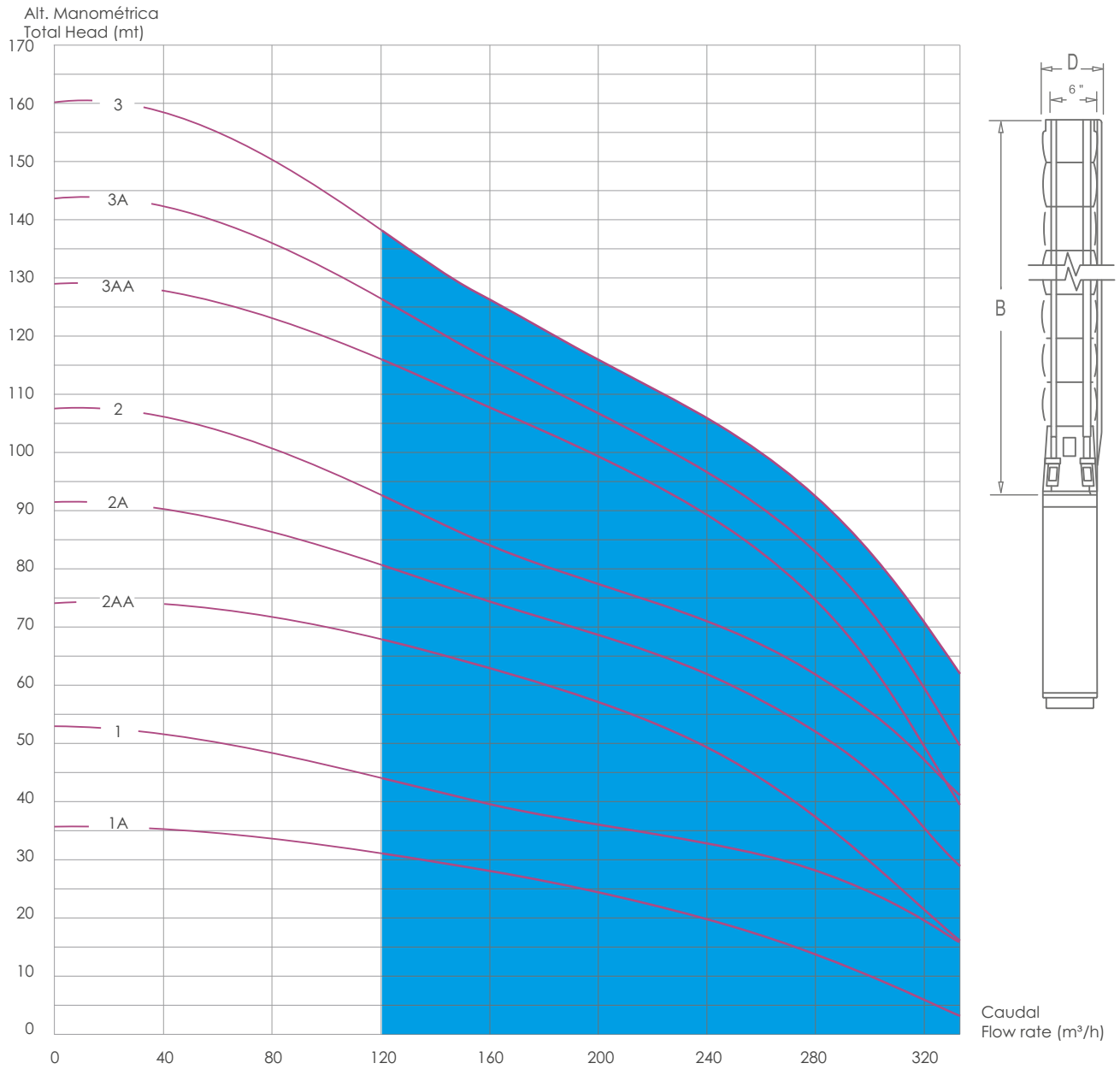
Saída / Outlet 6" Modelo / Model Tipo / Type	Motor 8"		m³/h	Caudal / Flow Rate												Comp. (B) Length (mm)	Peso (B) Weight (Kg)
	KW	HP		0	100.0	120.0	130.0	140.0	150.0	160.0	170.0	190.0	210.0	230.0	250.0		
BF 250 S 4AA	63	80	Altura Manométrica Total Head (m)	160	136	128	124	120	116	114	110	100	89	73	54	1109	45,0
BF 250 S 4A	75	100		174	147	139	135	130	126	124	120	112	100	85	65	1109	45,0
BF 250 S 4	75	100		187	158	148	143	140	135	133	128	120	110	95	75	1109	45,0
BF 250 S 5AA	93	125		205	175	165	160	155	150	145	143	130	115	96	72	1265	51,0
BF 250 S 5A	93	125		218	185	174	168	163	159	154	150	140	125	105	80	1265	51,0
BF 250 S 5	93	125		232	195	183	177	174	168	164	159	148	135	115	92	1265	51,0
BF 250 S 6	110	150		278	234	200	214	207	203	197	193	179	160	139	111	1421	58,0
BF 250 S 7	130	175		329	277	260	253	246	240	234	228	214	192	167	135	1577	64,0
BF 250 S 8	150	200		375	317	297	290	284	276	270	262	246	221	194	156	1733	70,0
BF 250 S 9	185	250		422	358	336	326	318	311	304	295	275	250	196	177	1889	80,0
BF 250 S 10	185	250	460	386	364	354	345	335	327	316	295	265	227	183	2045	86,0	

Comprimento e peso (B) referem-se à o Hidráulico. Com motor 8" D= 217 mm. Com motor 10" D= 235mm

Length and weight (B) refer to hydraulic part. With 8" motor D= 217 mm. With 10" motor D= 235 mm.

# BF 330 S - 60 Hz

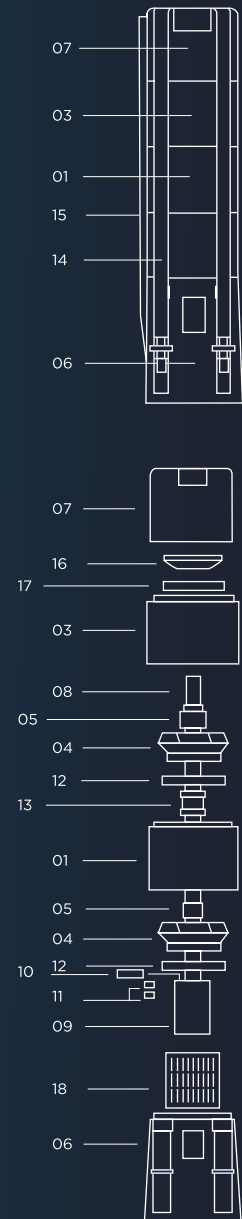
BF Pumps



# BF 330 S - 60 Hz

BF Pumps

pos.	Todos os componentes são feitos de aço inoxidável all components are made of stainless steel		Material
	Descrição	Description	
01	difusor	diffuser	AISI 304 [EN 1.4301] / 316[EN 1.4401]
03	difusor superior	top diffuser	AISI 304 [EN 1.4301] / 316[EN 1.4401]
04	turbina	impeller	AISI 304 [EN 1.4301] / 316[EN 1.4401]
05	casquilho cónico com porca	conical bush with nut	AISI 304 [EN 1.4301] / 316[EN 1.4401]
06	acoplamento do motor 8" A.D./E.T.	8" motor coupling flange - suction corp for motor DOL/S.D.	AISI 304 [EN 1.4301] / 316[EN 1.4401]
06	acoplamento do motor 6" A.D./E.T.	6" motor coupling flange - suction corp for motor DOL/S.D.	AISI 304 [EN 1.4301] / 316[EN 1.4401]
07	saída	discharge casing	AISI 304 [EN 1.4301] / 316[EN 1.4401]
08	veio	shaft	AISI 304 [EN 1.4301] / 316[EN 1.4401]
09	cardan	coupling (shaft pump end / shaft motor)	AISI 304 [EN 1.4301] / 316[EN 1.4401]
10	chaveta	coupling clamp	AISI 304 [EN 1.4301] / 316[EN 1.4401]
11	parafusos	screws	AISI 304 [EN 1.4301] / 316[EN 1.4401]
12	retentor da turbina	impeller fencer	NBR
13	hidroluva	shaft bearing	NBR
14	cintas de aperto	fitting belts	AISI 304 [EN 1.4301] / 316[EN 1.4401]
15	calha do cabo	cable guard	AISI 304 [EN 1.4301] / 316[EN 1.4401]
16	válvula	valve	AISI 304 [EN 1.4301] / 316[EN 1.4401]
17	retentor da válvula	valve fencer	AISI 304 [EN 1.4301] / 316[EN 1.4401]
18	rede de aspiração	suction strainer	AISI 304 [EN 1.4301] / 316[EN 1.4401]



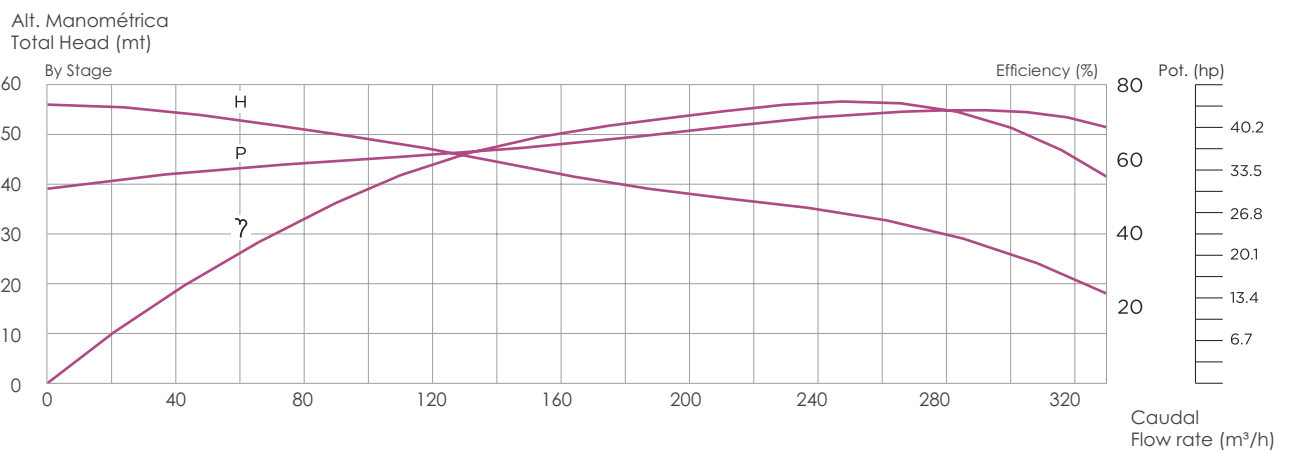
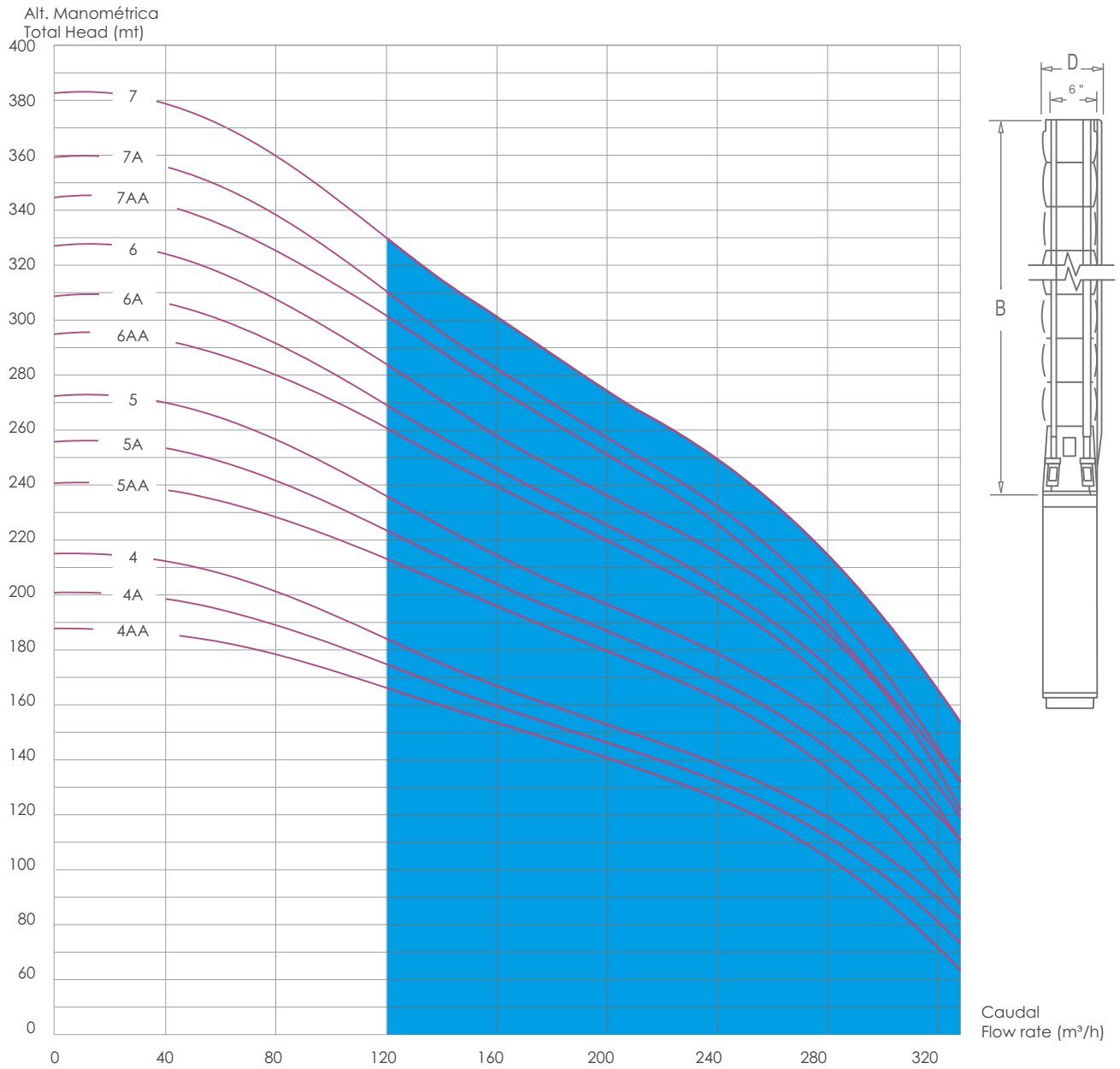
Saída / Outlet 6" Modelo / Model Tipo / Type	Motor 8"		Altura Manométrica Total Head (m)	Caudal / Flow Rate												Comp. (B) Length (mm)	Peso (B) Weight (Kg)
	KW	HP		0	120.0	140.0	160.0	180.0	200.0	220.0	240.0	260.0	280.0	300.0	330.0		
	m³/h																
BF 330 S 1A	22	30	39	34	33	31	29	27	25	22	19	16	12	6	608	28,0	
BF 330 S 1	30	40	56	47	45	42	40	38	37	35	33	30	26	18	608	28,0	
BF 330 S 2AA	45	60	79	73	70	67	64	61	57	53	47	41	33	20	784	56,0	
BF 330 S 2A	55	75	97	85	82	79	76	73	69	66	61	56	48	34	784	56,0	
BF 330 S 2	63	80	114	98	94	89	86	82	88	75	71	66	59	45	784	56,0	
BF 330 S 3AA	75	100	137	123	119	114	110	106	101	95	88	80	68	46	960	84,0	
BF 330 S 3A	93	125	153	135	130	124	119	114	109	104	97	89	78	57	960	84,0	
BF 330 S 3	93	125	170	146	140	134	128	123	118	113	106	98	88	69	960	84,0	

Comprimento e peso (B) referem-se à o Hidráulico. Com motor 6" e 8" D= 240 mm.

Length and weight (B) refer to hydraulic part. With 6" and 8" motor D= 240 mm.

# BF 330 S - 60 Hz

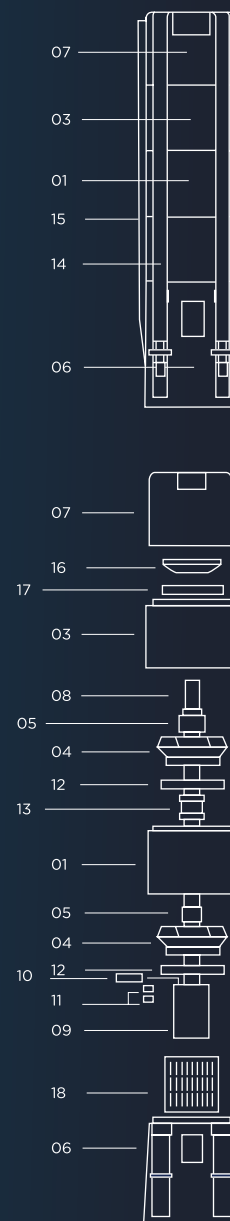
BF Pumps



# BF 330 S - 60 Hz

BF Pumps

pos.	Todos os componentes são feitos de aço inoxidável all components are made of stainless steel		Material
	Descrição	Description	
01	difusor	diffuser	AISI 304 [EN 1.4301] / 316[EN 1.4401]
03	difusor superior	top diffuser	AISI 304 [EN 1.4301] / 316[EN 1.4401]
04	turbina	impeller	AISI 304 [EN 1.4301] / 316[EN 1.4401]
05	casquilho cónico com porca	conical bush with nut	AISI 304 [EN 1.4301] / 316[EN 1.4401]
06	acoplamento do motor 8" A.D./E.T. 8" motor coupling flange - suction corp for motor DOL/S.D.		AISI 304 [EN 1.4301] / 316[EN 1.4401]
06	acoplamento do motor 6" A.D./E.T. 6" motor coupling flange - suction corp for motor DOL/S.D.		AISI 304 [EN 1.4301] / 316[EN 1.4401]
07	saída	discharge casing	AISI 304 [EN 1.4301] / 316[EN 1.4401]
08	veio	shaft	AISI 304 [EN 1.4301] / 316[EN 1.4401]
09	cardan	coupling (shaft pump end / shaft motor)	AISI 304 [EN 1.4301] / 316[EN 1.4401]
10	chaveta	coupling clamp	AISI 304 [EN 1.4301] / 316[EN 1.4401]
11	parafusos	screws	AISI 304 [EN 1.4301] / 316[EN 1.4401]
12	retentor da turbina	impeller fencer	NBR
13	hidroluva	shaft bearing	NBR
14	cintas de aperto	fitting belts	AISI 304 [EN 1.4301] / 316[EN 1.4401]
15	calha do cabo	cable guard	AISI 304 [EN 1.4301] / 316[EN 1.4401]
16	válvula	valve	AISI 304 [EN 1.4301] / 316[EN 1.4401]
17	retentor da válvula	valve fencer	AISI 304 [EN 1.4301] / 316[EN 1.4401]
18	rede de aspiração	suction strainer	AISI 304 [EN 1.4301] / 316[EN 1.4401]



Saída / Outlet 6" Modelo / Model Tipo / Type	Motor 8"		Altura Manométrica Total Head (m)	Caudal / Flow Rate													Comp. (B) Length (mm)	Peso (B) Weight (Kg)
	KW	HP		0	120.0	140.0	160.0	180.0	200.0	220.0	240.0	260.0	280.0	300.0	330.0			
BF 330 S 4AA	110	150	Altura Manométrica Total Head (m)	194	172	165	160	153	147	140	133	124	113	98	70	1136	110,0	
BF 330 S 4A	110	150		210	183	176	170	162	155	148	141	132	121	107	82	1136	110,0	
BF 330 S 4	110	150		226	195	186	179	171	163	167	150	140	131	117	94	1136	110,0	
BF 330 S 5AA	130	175		232	224	215	207	198	190	182	173	162	148	131	98	1312	139,0	
BF 330 S 5A	130	175		267	236	226	217	208	200	191	182	171	157	141	110	1312	139,0	
BF 330 S 5	150	200		288	250	240	230	220	211	203	194	183	170	154	125	1312	139,0	
BF 330 S 6AA	185	250		310	276	265	255	245	235	226	215	201	185	165	126	1488	167,0	
BF 330 S 6A	185	250		326	290	276	265	255	245	235	224	210	195	175	139	1488	167,0	
BF 330 S 6	185	250		345	300	287	275	264	254	244	232	220	205	183	140	1488	167,0	
BF 330 S 7AA	185	250		362	318	305	294	280	268	257	242	226	208	185	151	1664	195,0	
BF 330 S 7A	185	250		377	330	315	304	290	277	264	250	235	210	195	150	1664	195,0	
BF 330 S 7	220	300		403	350	335	320	306	295	283	270	255	236	215	174	1664	195,0	

Comprimento e peso (B) referem-se à o Hidráulico. Com motor 10" D= 275 mm. Com motor 12" D= 286 mm.

Length and weight (B) refer to hydraulic part. With 10" motor D= 275 mm. With 10" motor D= 286 mm.



Fábrica Nacional de Bombas, S.A.

Rua José de Brito Júnior, N° 4  
8005-500 Faro | Algarve | Portugal  
Tel. +351 289 805 523 | Fax +351 289 805 524  
Tlm + 351 937 300 681  
e-mail: geral@britefil.com  
www.britefil.com

Made in European Community - Portugal



WATER TECH INNOVATORS

Cofinanciado por:



UNIÃO EUROPEIA  
Fundo Europeu  
de Desenvolvimento Regional